



Arctic Development
Library

Pangnirtung Community Tourism Study
Type of Study: Plans/strategies
Date of Report: 1982
Catalogue Number: 11-32-43

11-32-43

PANGNIRTUNG COMMUNITY TOURISM STUDY

< ᖃᖅᑐᖅ ᓂᓂᓂ ᓂᓂᓂ ᓂᓂᓂ ᓂᓂᓂ >
ᓂᓂᓂ ᓂᓂᓂ ᓂᓂᓂ ᓂᓂᓂ ᓂᓂᓂ ᓂᓂᓂ



PANGNIRTUNG N.W.T. ᖃᖅᑐᖅ ᓂᓂᓂ ᓂᓂᓂ ᓂᓂᓂ
SUMMARY REPORT ᓂᓂᓂ ᓂᓂᓂ ᓂᓂᓂ ᓂᓂᓂ ᓂᓂᓂ
FEBRUARY 1982
MARSHALL MACKLIN MONAGHAN



TABLE OF CONTENTS

PAGE NO.

ገጽ ቁጥር

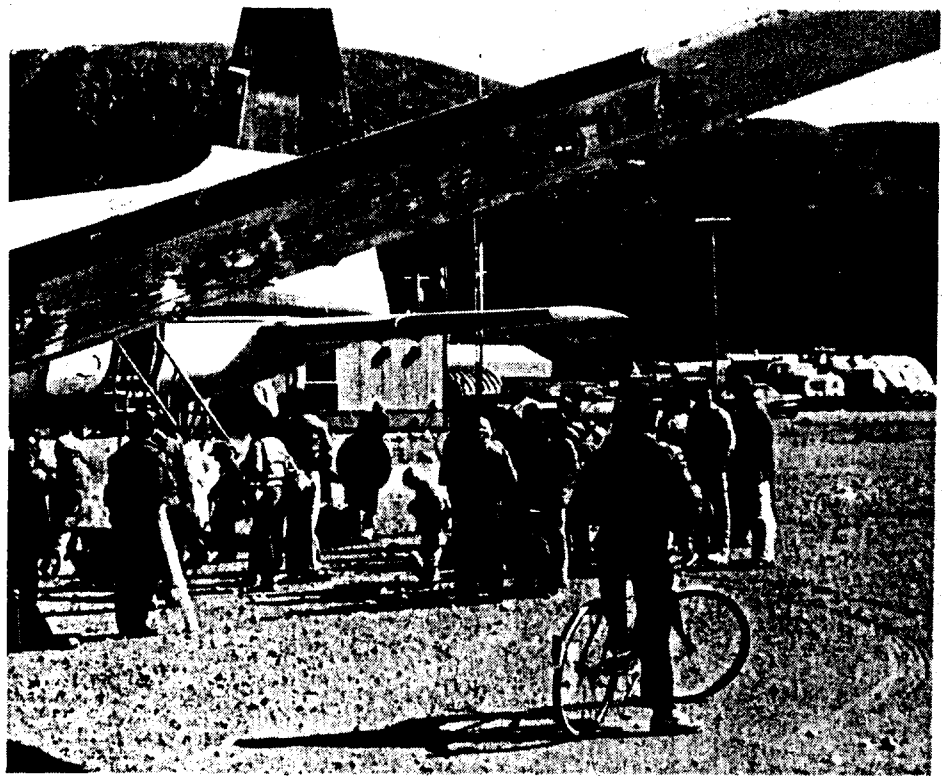
TABLE OF CONTENTS

1.	PURPOSE OF THE REPORT	1
2.	WHY THE STUDY WAS DONE	2
3.	HOW THE STUDY WAS DONE	3
4.	TOURISM IN PANGNIRTUNG TODAY	4
5.	HOW SHOULD TOURISM BE DEVELOPED	5
6.	RESOURCES OF THE LAND	6
7.	RESOURCES OF THE PEOPLE	7
8.	COMMUNITY FEELINGS ABOUT TOURISM	8
9.	FUTURE VISITORS TO PANGNIRTUNG	9
10.	TOURISM IN THE FUTURE	10
11.	THE TOURISM DEVELOPMENT PLAN	12
12.	HOW MANY TOURISTS WILL VISIT PANGNIRTUNG	13
13.	THE COMMUNITY TOURISM BOARD	14
14.	WHAT WILL TOURISTS DO IN PANGNIRTUNG	16
15.	WHAT TRAINING IS NEEDED	18
16.	PROMOTION OF PANGNIRTUNG AS A PLACE TO TRAVEL	19
17.	WHO WILL BUILD THE TOURISM FACILITIES	20
18.	WHO WILL OPERATE THE TOURISM FACILITIES	21
19.	HOW DOES THE COMMUNITY BENEFIT	22
20.	WHAT IS THE ROLE OF THE COMMUNITY	23

1.	ገጽ ቁጥር	1.
2.	ገጽ ቁጥር	2.
3.	ገጽ ቁጥር	3.
4.	ገጽ ቁጥር	4.
5.	ገጽ ቁጥር	5.
6.	ገጽ ቁጥር	6.
7.	ገጽ ቁጥር	7.
8.	ገጽ ቁጥር	8.
9.	ገጽ ቁጥር	9.
10.	ገጽ ቁጥር	10.
11.	ገጽ ቁጥር	12.
12.	ገጽ ቁጥር	13.
13.	ገጽ ቁጥር	14.
14.	ገጽ ቁጥር	16.
15.	ገጽ ቁጥር	18.
16.	ገጽ ቁጥር	19.
17.	ገጽ ቁጥር	20.
18.	ገጽ ቁጥር	21.
19.	ገጽ ቁጥር	22.
20.	ገጽ ቁጥር	23.







The community offers services to six licensed outfitters and provides tent accommodations at the Pitsutinu Tuqavik Territorial Park.





5. HOW SHOULD TOURISM BE DEVELOPED

5. ᖃᓄᓂ ስራ ጥናት ለማጠናከር

Present tourism visitation to Pangnirtung is primarily related to the use of Auyuittuq National Park or is associated with char fishing activities. To-date, the benefits to the community have been minimal and not well distributed to local residents. On the other hand, the problems with tourism have been many.

This tourism study was to suggest ways to correct these problems by developing community based tourism opportunities. Community based tourism means that all developments and facilities for tourists would be centered in and around the community to ensure that the benefits of tourism went to the local people, while minimizing costs.

Also, the type of tourism to be considered in Pangnirtung was to be different from present use. The study was to consider a type of tourism which provided the opportunity for tourists to learn, observe, and experience the Arctic and the ways of the Inuit people.

ሌሎች ግብርና ንግድ ለማጠናከር ለማድረግ የሚያስፈልጉ ገንዘብ ድጋፍ ለሰጠው ደንበኞች ለሰጠው ገቢዎች ለማሰባሰብ ነው። ሌሎች በግብርና ላይ ይህን ዓይነት ግብርና ለማድረግ ለሚያስፈልጉ ገንዘብ ለማጠናከር ነው።





ሌላ ግንኙነት ለሚፈጠረው ግብርና ለማሰባሰብ ለሚያስፈልጉ ገንዘብ ለማጠናከር ነው። ሌላ ግንኙነት ለሚፈጠረው ግብርና ለማሰባሰብ ለሚያስፈልጉ ገንዘብ ለማጠናከር ነው።

ሌላ ግንኙነት ለሚፈጠረው ግብርና ለማሰባሰብ ለሚያስፈልጉ ገንዘብ ለማጠናከር ነው። ሌላ ግንኙነት ለሚፈጠረው ግብርና ለማሰባሰብ ለሚያስፈልጉ ገንዘብ ለማጠናከር ነው።



Legend

Land Animals

-  Falcon
-  Canada Goose
-  Polar Bear
-  Caribou

Marine Animals

-  Whale
-  Eider Duck
-  Murre
-  Seagull
-  Seal

Wairus

-  Wairus
- Commercial Hunting, Trapping and Fishing**
-  Inuit Fishing
-  Potential Fishing
-  Arctic Fox

Resources of the Land

ᑭᑭᑭᑭᑭᑭᑭᑭ ᑭᑭᑭᑭᑭᑭᑭᑭ

-  Potential Tourist Fishing Area
-  Interesting and Unusual Landforms

Pangnirtung Tourism Study






Marshall Macklin Monaghan Limited



Legend

-  Summer Camp
-  Outpost Camp
-  Tourist Camp
-  Thule

-  Weather Station
-  Old Hudsons Bay Cabin
-  Museum Society Building

-  Whaling Station

Resources of the People

Ae9698A2200

Pangnirtung Tourism Study



2

Marshall Macklin Monaghan Limited

7. RESOURCES OF THE PEOPLE

"Resources of the People" refers to features and sites which represent the history, lifestyle, and special events of the Inuit and local white culture in Pangnirtung including the times of the whale hunting days.

The study identified these resources to determine if these were places that tourists might like to visit. It was also important to identify places which local residents did not want tourists to go, such as the summer camps on Cumberland Sound.

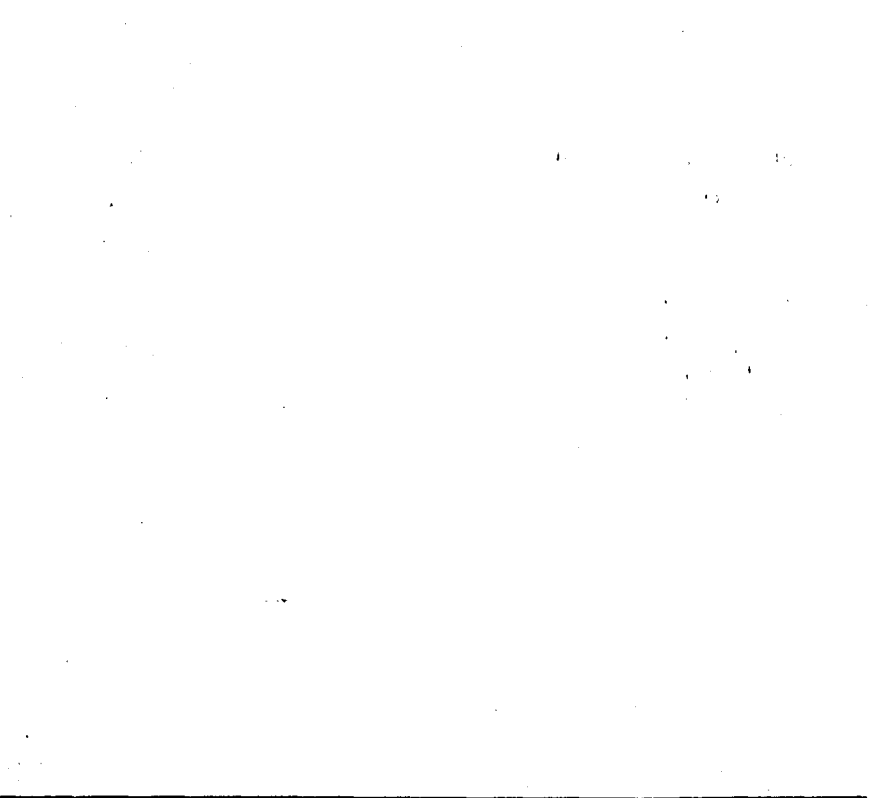
The sites and features identified in the study are shown on the map called Resources of the People.

7. ᖃᓄᕐᓴᕋᓴᖅ ᐸᕐᕄᕈ ᐃᓄᐸ

"ᖃᓄᕐᓴᕋᓴᖅ ᐸᕐᕄᕈ ᐃᓄᐸ" ᐱᕐᕐᕐᕐᓴᕐᕐᕐᕐ ᐸᐃᕐᕐᕐᕐᕐᕐ ᐃᓄᐸᕋᓴᖅ ᐸᓄᕐ ᖃᓄᕐᕐ ᐃᓄᕐᕐᕐ ᕐᓴᕋᓴᖅ ᐸᕐᕐᕐᕐᕐ ᐸᕐᕐᕐ ᖃᓄᐸᕐᕐ ᓄᕐᕐᕐᕐᕐ ᐃᓄᐸᕐ ᐸᕐᕐᕐ ᖃᓄᕐᕐ ᐃᓄᕐᕐᕐᕐ ᐸᕐᕐᕐ ᐸᕐᕐᕐᕐ ᐸᕐᕐᕐᕐᕐ.

ᐸᕐᕐ ᖃᕐᕐᕐᕐᕐ ᖃᕐᕐᕐᕐᕐᕐ ᐸᕐᕐᕐ ᐸᕐᕐᕐᕐᕐᕐ ᐸᕐᕐᕐ ᐸᕐᕐᕐᕐ ᐸᕐᕐᕐᕐᕐᕐ ᐸᕐᕐᕐᕐᕐ ᐸᕐᕐᕐᕐᕐᕐ ᐸᕐᕐᕐᕐᕐᕐ ᐸᕐᕐᕐᕐᕐᕐ ᐸᕐᕐᕐᕐᕐᕐᕐ.

ᐸᕐᕐᕐ ᐸᕐᕐᕐᕐᕐᕐ ᐸᕐᕐᕐᕐᕐᕐ ᐸᕐᕐᕐᕐᕐᕐᕐ ᐸᕐᕐᕐᕐᕐᕐᕐᕐᕐ.





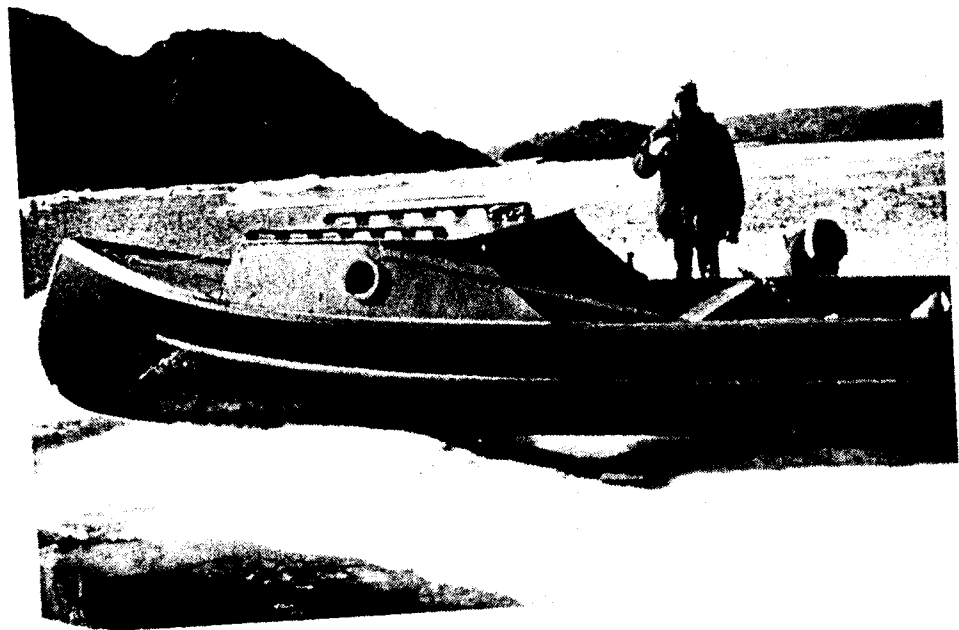
Some representative comments from residents are outlined below.

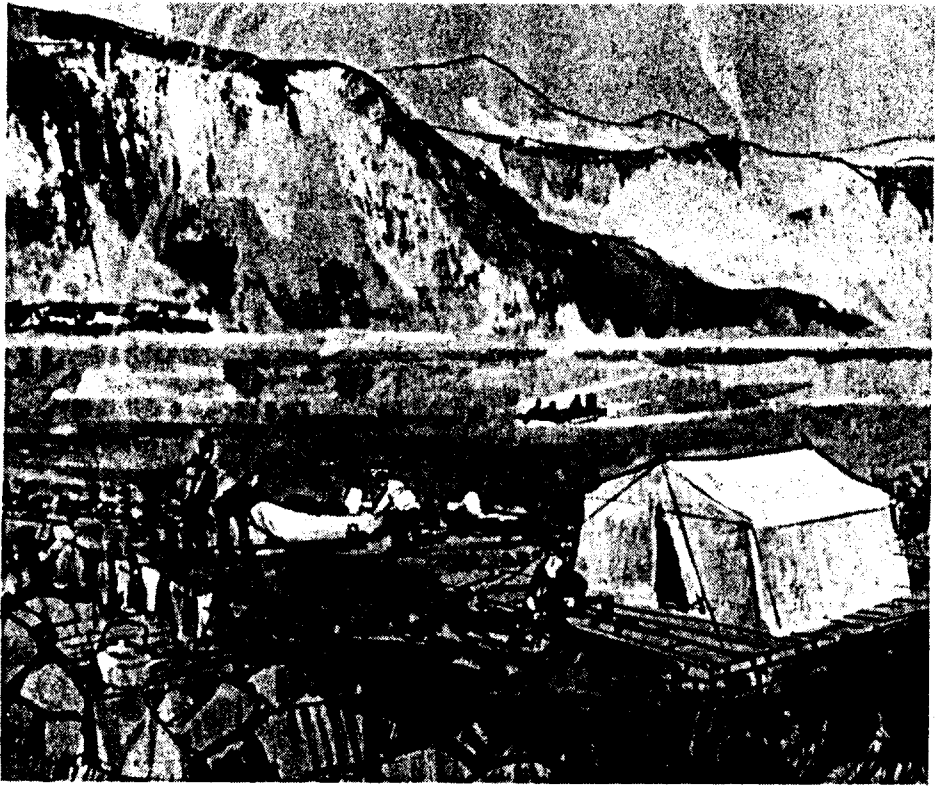
- o "Tourists interfere with the local people by walking into their houses and asking many questions."
- o "The young people need help in finding jobs, some of them quit school early and then have nothing to do."

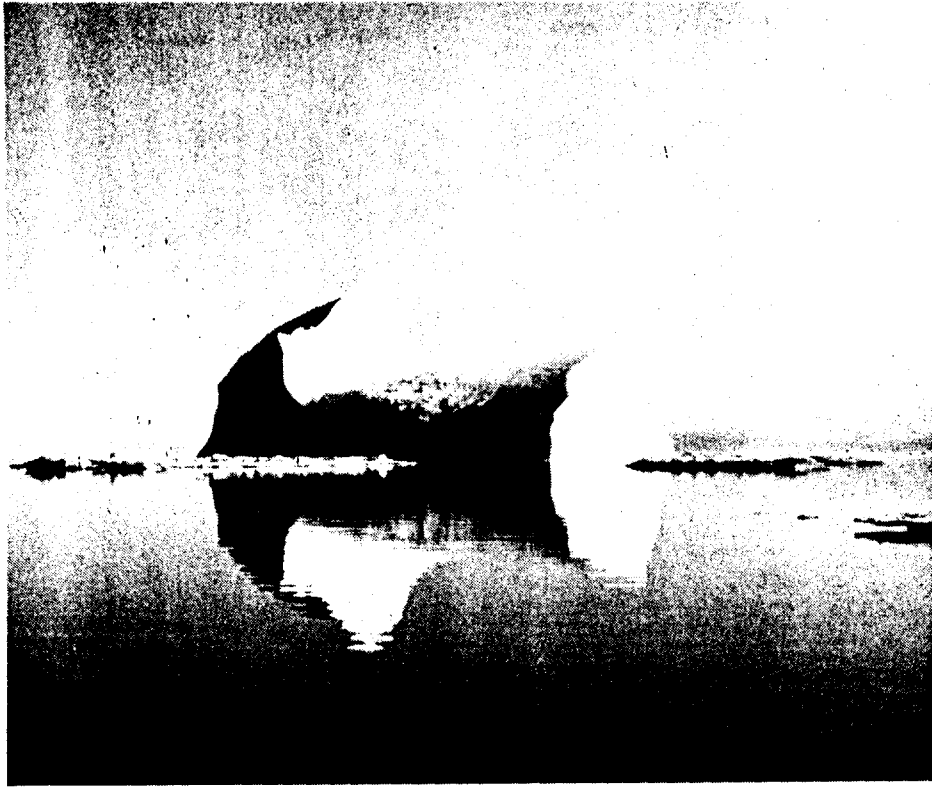
















DETAILS OF CAPITAL COSTS

ᐃᑦᐃᑦᐃᑦ ᑕᑦᑕᑦᑕᑦ ᐃᑦᑕᑦᑕᑦ

<u>Source of Funds</u>	<u>\$ Over Five Years</u>	<u>ᐃᑦᑕᑦᑕᑦ ᑕᑦᑕᑦᑕᑦ</u>	<u>\$</u>
Department of Economic Development and Tourism	362 645	ᐃᑦᑕᑦᑕᑦ ᑕᑦᑕᑦᑕᑦ	362 645
Other Federal/Territorial Agencies	350 000	ᐃᑦᑕᑦᑕᑦ / ᐃᑦᑕᑦᑕᑦ	350 000
Private Sector (Hotel)	1.8-2.6 Million	ᐃᑦᑕᑦᑕᑦ (ᑕᑦᑕᑦᑕᑦ)	1.8 - 2.6 ᑕᑦᑕᑦᑕᑦ



18. WHO WILL OPERATE THE TOURISM FACILITIES

The responsibility for the operation and maintenance of tourism facilities will be shared between the territorial government, the Community Tourism Board and private businessmen.

It is proposed that the Community Tourism Board will be responsible for the operation of those programs that supply tourists with information, introduce tourists to the community, and promote Pangnirtung as a place to travel. In addition, it is proposed that in conjunction with the Department of Economic Development and Tourism, the Community Tourism Board undertake the maintenance responsibility for remote trails and sites.

These operating costs would be shared by the Department of Economic Development and Tourism under a contractual agreement with the Community Tourism Board.

The operating costs of the Community Tourism Board will be recovered through additional fees charged to the tour group visitors.

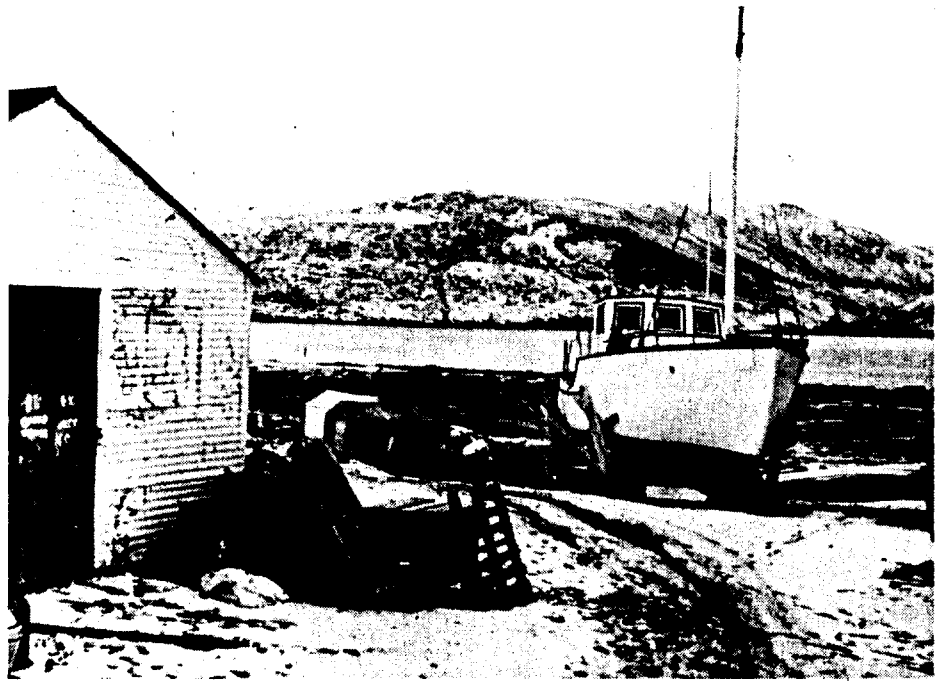
18. P d e q u e s t i o n s w h o w i l l o p e r a t e t h e t o u r i s m f a c i l i t i e s

C d d b e t w e e n t h e t e r r i t o r i a l g o v e r n m e n t , t h e C o m m u n i t y T o u r i s m B o a r d a n d p r i v a t e b u s i n e s s m e n .

I t i s p r o p o s e d t h a t t h e C o m m u n i t y T o u r i s m B o a r d w i l l b e r e s p o n s i b l e f o r t h e o p e r a t i o n o f t h o s e p r o g r a m s t h a t s u p p l y t o u r i s t s w i t h i n f o r m a t i o n , i n t r o d u c e t o u r i s t s t o t h e c o m m u n i t y , a n d p r o m o t e P a n g n i r t u n g a s a p l a c e t o t r a v e l . I n a d d i t i o n , i t i s p r o p o s e d t h a t i n c o n j u n c t i o n w i t h t h e D e p a r t m e n t o f E c o n o m i c D e v e l o p m e n t a n d T o u r i s m , t h e C o m m u n i t y T o u r i s m B o a r d u n d e r t a k e t h e m a i n t e n a n c e r e s p o n s i b i l i t y f o r r e m o t e t r a i l s a n d s i t e s .

T h e s e o p e r a t i n g c o s t s w o u l d b e s h a r e d b y t h e D e p a r t m e n t o f E c o n o m i c D e v e l o p m e n t a n d T o u r i s m u n d e r a c o n t r a c t u a l a g r e e m e n t w i t h t h e C o m m u n i t y T o u r i s m B o a r d .

T h e o p e r a t i n g c o s t s o f t h e C o m m u n i t y T o u r i s m B o a r d w i l l b e r e c o v e r e d t h r o u g h a d d i t i o n a l f e e s c h a r g e d t o t h e t o u r g r o u p v i s i t o r s .





20. WHAT IS THE ROLE OF THE COMMUNITY

The tourism study is now complete. The study has suggested ways in which tourism can be developed in Pangnirtung. It has discussed the benefits of tourism and what the community's role could be. It is now up to the community to approve the plan and to work with the Department of Economic Development and Tourism to implement the tourism development program.

20. 'ᓄᓂᓐ ᓄᓇᓂᓐ ᓄᓇᓂᓐ ᓄᓇᓂᓐ

CALC CLe >C50ᓐ ᓄᓐ ᓄᓄᓄᓐ ᓄᓄᓄᓐ ᓄᓄᓄᓐ. CLe ᓄᓄᓄᓐ -
ᓄᓐ ᓄᓄᓄᓐ ᓄᓄᓄᓐ CLe >C50ᓐ ᓄᓄᓄᓐ ᓄᓄᓄᓐ ᓄᓄᓄᓐ ᓄᓄᓄᓐ.
ᓄᓄᓄᓐ ᓄᓄᓄᓐ CLe >C50ᓐ ᓄᓄᓄᓐ ᓄᓄᓄᓐ ᓄᓄᓄᓐ ᓄᓄᓄᓐ
ᓄᓄᓄᓐ ᓄᓄᓄᓐ ᓄᓄᓄᓐ ᓄᓄᓄᓐ. CALC ᓄᓄᓄᓐ ᓄᓄᓄᓐ ᓄᓄᓄᓐ
ᓄᓄᓄᓐ ᓄᓄᓄᓐ ᓄᓄᓄᓐ ᓄᓄᓄᓐ ᓄᓄᓄᓐ ᓄᓄᓄᓐ ᓄᓄᓄᓐ
ᓄᓄᓄᓐ ᓄᓄᓄᓐ ᓄᓄᓄᓐ ᓄᓄᓄᓐ ᓄᓄᓄᓐ ᓄᓄᓄᓐ ᓄᓄᓄᓐ
>C50ᓐ ᓄᓐ ᓄᓄᓄᓐ.