



Arctic Development  
Library

***Nogap - "baseline Data Study, Volume I,  
Indicator Guide"***

***Type of Study: Reference Material  
Mining/oil/energy, Nwt Oil Industry***

***Date of Report: 1987***

***Author: G.n.w.t. - Social Services***

***Catalogue Number: 6-1-87***

6-1-87

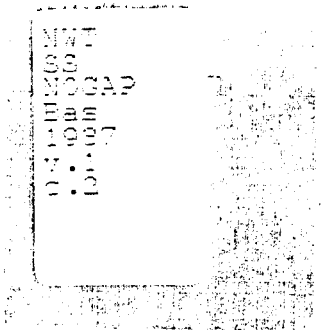
NOGAP - "BASELINE DATA STUDY, VOLUME 1,  
INDICATOR GUIDE"

Sector: Mining/Oil/Energy

6-1-87

Reference Material

"Baseline Data Study  
Volume I, Indicator Guide"



"Baseline Data Study  
Volume I, Indicator Guide"

Tabled at the Steering Committee of 28.03.87  
Cambridge Bay, NWT

The Research Team,  
Beaufort Delta Social Impact Baseline Data Study  
Department of Social Services,  
Government of the Northwest Territories

Funded under the Northern Oil and Gas Action Project

LEGISLATIVE LIBRARY  
YELLOWKNIFE, N.W.T.

## ACKNOWLEDGEMENTS

The Department of **Social Services** would like to express their appreciation for all the support and advice they received in conducting this study. We would like to acknowledge the Federal Government's Northern Oil and Gas Action Program for grant support and the Baseline **Data** Study's Steering Committee and Project Review Committee members whose words of advice and encouragement were generously given and greatly appreciated. We also owe a special thank you to our many sources which provided the data contained herein.

While all those mentioned above contributed to this study, the Research Team assumes full responsibility for its contents and any errors it may contain.

We hope this information assists community councils and residents of the Beaufort Delta in making informed decisions on community matters.

BASELINE DATA STUDY

TABLE OF CONTENTS

VOLUME 1: INDICATOR GUIDE

Introduction . . . . . \* . . . . •0 . . . . . i

Income Support Programs:

1.1 Social Assistance . . . . . \*\* . . . . 00 . . . . . 1.1.1  
1.2 Unemployment Insurance . . . . . 0 . . . . . 1.2.1  
1.3 G.I.S., S.P.A. and O.A.S . . . . . 1.3.1

Family Life:

1.4 Child Neglect Complaints . . . . . 1.4.1  
1.5 Child Welfare . . . . . 1.5.1  
1.6 Family Life Census Data . . . . . 1.6.1

Education:

1.7 Primary, Secondary & Continuing Education . . . . . 1.7.1  
1.8 Education Census Data . . . . . 1.8.1

Health:

1.9 Industrial Accidents . . . . . 1.9.1  
1.10 Abortions and Doctor Positions . . . . . 1.10.1  
1.11 Health and Welfare Canada . . . . . 1.11.1

Mental Health:

1.12 Suicides and Attempts . . . . . 1.12.1

Crime and Public Justice:

1.13 CATCH Data . . . . . 0 . . . . . 1.13.1  
1.14 Crime By Offence Reported & Status . . . . . 1.14.1  
1.15 RCMP Community Services & Alcohol Use/Abuse . . . . . 1.15.1

Young Offenders:

1.16 Young Offenders Act . . . . . 1.16.1

Housing:

1.17 Housing Ownership By Type . . . . . 1.17.1  
1.18 Housing Associations Revenues & Expenditures . . . . . 1.18.1  
1.18 Housing Corporation Data . . . . . 1.18.3  
1.19 Housing Census Data . . . . . 1.19.1

Alcohol and Drugs:

1.20 Alcohol Projects By Type . . . . . 1.20.1  
1.21 Alcohol Sales By Type . . . . . 1.21.1

Community Participation and Leisure:

1.22 Facility and Program Funding . . . . . 1.22.1  
1.23 Facilities, Committees and Services . . . . . 1.23.1  
1.24 Gambling By Type and Revenue . . . . . 1.24.1

General:

1.25 Population Estimates and Projections . . . . . 1.25.1  
1.26 Demographic and Income Data . . . . . 1.26.1  
1.27 Living Cost Differentials . . . . . 1.27.1  
1.28 Exploration Activities . . . . .\* . . . . . 1.28.1  
1.29 Mother Tongue... . . . . .\* . . . . . 1.29.1  
1.30 Social Facilities and Programs . . . . . 1.30.1

Part 2: Index

2. Index . . . . . Forthcoming

## INTRODUCTION

### Socio-economic Monitoring

As recent developments in the field of cumulative impact monitoring and assessment show, a great deal of **socio-economic** data must be compiled and summarized before appropriate social programs and policies can be prepared. This report is concerned primarily with the examination of existing statistical measures of the following eleven **socio-economic** issue areas which were identified by the Steering Committee during the past two years:

- (1) Income Support;
- (2) Family Life;
- (3) Education;
- (4) Health;
- (5) Mental Health;
- (6) Crime and Public Justice;
- (7) Young Offenders;
- (8) Housing;
- (9) Alcohol and Drugs;
- (10) Participation and Leisure; and
- (11) General.

As our objective has been to review existing information systems with the goal of integration, the data sets presented have largely been extracted from existing government archival records; statistics which were not designed primarily for **socio-economic** monitoring. However, these statistics are useful as they provide valuable background information about the population in question, the scope of its **socio-economic** problems and needs, and the effectiveness of actions taken. They also help us to answer the question of what **empirical** data is available.

### Qualities of an Indicator

The term "**indicator**" is used in this study to refer to a data set which was selected for examination on the basis of the assumption that it is related to the **socio-economic** issues under examination. It does not refer to a measure of some aspect of society based on combined, corrected and refined social statistics.

Preferably, the information that is to be derived from an indicator is not neutral. If it is to be of any use, the indicator should permit one to classify the situations encountered on a scale going from most unfavorable to most favorable, and to determine whether the development of the **socio-economic** phenomenon over time is towards an improvement

or a deterioration of the situation. The indicator then serves to support or refute a value **judgement** on the state and development of the phenomenon. By presenting the "**raw**" data sets as follows, we presuppose that those using this information will classify the data according to their own scale of preferences.

Among qualities which are of value in an indicator, validity, sensitivity, specificity and reliability are particularly important. Validity refers to the extent to which an indicator accurately measures the intended concept, variable or phenomenon. Ideally an indicator should be sensitive enough to vary significantly and rapidly when changes affecting the phenomenon under observation occur and specific enough to vary only when this phenomenon varies. An indicator should also be reliable enough to permit valid temporal and spatial comparisons to be made.

The indicators contained herein were selected by the Steering Committee on the **basis** of their availability and feasibility. Their presentation required overcoming few technical, administrative, legal and financial difficulties. Care has been taken to ensure that the longitudinal data has been obtained from sources which are comparable in kind and quality and that the method of calculation used is objective and consistent. Where exceptions to this criteria were discovered, they have been noted in the "**Indicator Guide**" corresponding to the **data set in** question. We hope that this study has benefited from the input of a Steering Committee of community residents in the selection of indicators which are reasonable intelligible to the non-specialist.

With few exceptions all data has been aggregated according to community boundaries. Where only a total for all nine communities **is** available the data has been **collapsed to** protect confidentiality.

#### Organization and Objectives

This Baseline Data Study is based on the framework developed by Michael J. Carley in Cumulative Socioeconomic Monitoring: Issues and Indicators for Canada's Beaufort Region, a study undertaken in 1984 under contract to the Energy, Mines and Resources Secretariat, Government of the Northwest Territories and the Northern Economic Planning Branch, Department of Indian Affairs and Northern Development Government of Canada.

In developing the Baseline **DataSystem** as a basic reference tool for use in identifying the social impacts of petroleum industry related development on the communities of the Beaufort Delta area, the Department of Social Services had three general goals:



- to **make socio-economic** data easily accessible to as wide a group of users as possible;
- to increase the efficiency and effectiveness of data development, collection and distribution through the identification of data gaps and by clarifying the potential to fill these gaps through the standardization of variable definitions and original research; and to reduce the response burden of government departments by providing a **Systematic**, regularly updated, **indexed**, source of baseline data.

It was envisaged that a fully developed Baseline Data System would **serve** a wide variety of **users** through a number of automated (on line) and paper products. The continued development of the system during the next three years through planned upgrades with further degrees of sophistication being added over time implies that the detailed requirements of all users cannot be met in the initial stages. We *Would* appreciate your comments and suggestions for **improvements**.

As the **potential** users of this System encompass a wide range of groups and **individuals** covering all sectors, interests and degrees of sophistication, we have concentrated on ensuring wide and easy accessibility, simplicity of presentation and on maintaining a high level of data reliability and validity in this first report.

The report contains a two part description of each **indicator**: [1] an "indicator **guide**" which provides **details** regarding its source, a technical discussion which **explains** how it was calculated, and any important **points** regarding its reliability and validity; and [2] the data set itself. It also includes an index of all **data** sets presented by name, by source and by variable. This format should allow **ready reference** for readers with different interests. It is hoped that this study may serve as a reference work "for all those who, by reason of their **employment** or residency, have the need to **understand** more about the Beaufort Delta communities. This report will be updated **annually**."

While much has been written about the relative merits of socio-economic monitoring, no systematic attempt has been made to evaluate it in **practice**. We have focused our attentions on data collection, rather than analysis, to date, as it is a logical prerequisite. During the **remainder** of this project we shall endeavor to **analyse** this **baseline data** but a **discussion** of these plans is beyond the scope of this study.

ISSUE:

Income Support Programs

INDICATORS:

SA Dollars Paid By Reason;  
SA Recipients and-Dependents;  
SA Recipients and Spouse By Age and Sex;  
SA Recipients By Marital Status;  
SA Recipients By Type of Housing;  
SA Recipients and Spouse By Education and Training;  
SA Recipients By **Employment** Pattern and **Occupation**;  
SA Recipients By Income;  
SA Recipients By Type;  
SA Recipients By Financial Needs; and  
SA Recipients By Problem Area

SOURCE :

Financial Information System  
**Social Services Department**  
Government of the N.W.T.

CONTACT:

Co-ordinator  
Financial Assistance Program  
Social Services Department  
Government of the N.W.T.  
**Yellowknife, N.W.T.**  
X1A 2L9  
Phone: (403) 873-7610

DATA COLLECTION METHOD:

Data is extracted via computer program from the Financial Assistance System. This extract program is run annually and data captured is manually entered into the NOGAP Database System which in turn produces the reports contained in Volume 1.

**Data contained in** the Financial Assistance System (ASSIST) **is** derived from the "Application for Financial

Assistance'! Forms completed by the Department's social workers in the course of their duties. When a social worker determines that an applicant does qualify for financial assistance, the applicant's form is forwarded to Headquarters and the details of the case are entered into the Financial Assistance System. No record is kept of those refused financial assistance.

DATA RELIABILITY AND VALIDITY:

The Financial Assistance System was established in April 1980. As forms are completed by social workers, this data is subject to human error.

**Data** contained in the ASSIST system is filed in the computer according to the applicant's Health Care Plan number. This prevents double counting of cases in the event that a recipient makes several applications in the same month.

If a person requests financial assistance on more than one occasion during a year, **each** claim may be approved for a different reason. Also, in cases like this, a person may be interviewed by different social workers and his needs **may be** assessed differently each time as his circumstances change. If more than one reason or if different needs were specified on an application for assistance or if a **person's** case history changed during a year, the recipient is included in the computer's **case** count for that category (eg. reason for assistance) where the dollar value is greatest. This prevents the computer from double counting such cases.

Monthly statistics are not finalized until at least three months after the end of a particular month to ensure all social assistance information for that month has been received by **Yellowknife** (this applies to the Minister's Report, the Assistance Month Report is updated continuously) This procedure results in the consistent, accurate reporting of monthly assistance.

The Financial Assistance System provides a quarterly Minister's Report, a monthly Batching Month Report and a monthly Assistance Month Report. "Dateline", a federal government computer system, produced comparable reports for the period April 1976 to March 1980 but this data is not available through the NOGAP Baseline Data System. The above reports present monthly statistics and therefore permit seasonal variations to be charted.

The NOGAP Baseline Data System only provides annual aggregates of such information.

The Financial Assistance System does not contain data on the ethnicity of claimants as it **was** not designed for socio-economic monitoring of the community but for fiscal reporting. Those using this information are advised that periodic increases in assistance rates and changes in the criteria for qualifying for financial assistance have weakened the comparative value of the longitudinal data.

Many factors affect the level of financial assistance in a community and the "reason" categories provided to choose from on the application form do not capture all of them.

DEFINITIONS :

The following definitions apply to the categories used in the Social Assistance indicators:

Community: the community in which the financial assistance was given.

Indicator: SA Dollars Paid by Reason

Dollars Paid By Reason: each time an application for financial assistance is made the social worker determines the economic reason for the claim.

Claimants must reapply for financial assistance each month so the reason for assistance in each case may change on a monthly basis. The five allowable reasons for financial assistance are: (1) ill health or disabled; (2) dependent children; (3) unemployed but able; (4) not enough income; and (5) other.

The reason "**Other**" covers unusual situations such as a delay in Old Age Security or **cheques** and is determined by the social worker.

The figure shown is the gross dollars paid out in financial assistance for each category of reason.

**Cases:** caseload is reported as "**case-months**", the sum of the number of cases in each month of the year. It is not a count of the number of individual cases (recipients) and must be distinguished as such.

Indicator: SA Claimants and Dependents

Number of Dependents - A member of the applicant's family who resides with him/her and is wholly or in part dependent upon the income of the applicant. This includes the spouse living with the applicant but does not include a foster child living in the applicant's home or an adult in the home which is maintained by the applicant.

Indicator: SA Claimants by Income

Type of Income:

Earned - Money that comes from employment. Includes money earned by artists, carvers, hunters, **trappers and** fishermen.

Unearned - Money that does not come from employment ie. Old Age Benefits, U.I.C., rent/board income, assets, etc.

Assets - This includes property, bonds, cash, stocks, or money held in trust.

Indicator: SA Claimants by Type

Number of Types of Assistance Cited:

Transient - A person who does not have a fixed address.

First Time - An applicant that has not received assistance in the NWT before.

Periodic - The applicant has received assistance before but less than 6 times in the last year.

Regular - Assistance has been paid to the applicant 6 or more times in the last year.

Payroll - The applicant is a long-term recipient approved for payroll action.

Indicator: SA Claimants by Financial Needs

Other - Includes special care services, moving expenses, funeral expenses, home repairs, **health** costs, etc.

ISSUE:

Income Support Programs

INDICATORS:

UI Claimants By Age and Sex;  
UI Claimants By Reason and Sex,  
UI Total Claim Count;  
UI Weekly Benefit Rates By Sex,  
UI Insured Weeks By Sex;  
UI Weeks on Claim By Sex; and  
- UI Claimants By Occupation and Sex.

SOURCE :

Claimant Statistics Report  
Canada Employment and Immigration

CONTACT:

Manager  
Operations Unit  
**Canada Employment and Immigration Commission (CEIC)**  
Regional Office  
Bag 1170  
**Yellowknife, N.W.T.**  
X1A 2R3  
Phone: (403) 920-8433

DATA COLLECTION METHOD:

Data is extracted manually from the monthly Claimant Statistics Report printout provided by CEIC to the Bureau of Statistics, **G.N.W.T.** This data is then manually entered into the NOGAP Baseline Data System which in turn produces the Reports contained in volume 1.

Data contained in the Claimant Statistics Report is derived from Unemployment Insurance Applications forms completed by applicants and forwarded to CEIC in **Yellowknife** where they are reviewed. Approved applications are entered into the Commission's computer.

DATA RELIABILITY AND VALIDITY:

The quarterly Claimant Statistics Report is actually a snapshot of all **unemployment** insurance claims active on one day of a specific month. Since 1980, January, April, July and October have been used as the reporting months. Communities are reported by their postal codes. **Paulatuk** figures are included in those reported for **Inuvik** as it did not have its own postal code prior to 1984 when the Claimant Statistics Reporting System was established and the system has not been updated.

The reliability of data captured on the Claimant Statistics Report depends completely on the accuracy of applicants reports.

The possibility of human error also exists due to the necessity of manually extracting information from the Claimant Statistics Report for entry into the **NOGAP Baseline Data System**.

The Claimants Statistics Report does not contain data on the ethnicity of claimants. The number of unemployment insurance claims is not a direct indication of unemployment as there may be many unemployed who are ineligible to collect unemployment insurance or who choose not to apply.

Information under the **U.I.** Claimants by Occupation and Sex indicator includes **U.I.** applicants who have not had their claim verified and approved. Some of these people might not be entitled to any benefits, consequently they are not included in any of the other categories.

ISSUE:

Income Support Programs

INDICATORS:

Pensioners by Benefit Type: Spouses Allowance (SPA), Guaranteed Income Supplement (GIS), and Old Age Security (OAS) Recipients by Community; Total NWT GIS and SPA Recipients and Dollars Paid.

SOURCE :

Health and Welfare Canada  
Information Services Section,  
Information Systems Directorate,  
Policy Planning and Information Branch,

CONTACT:

Information Services Section,  
Information Systems Directorate,  
Policy Planning and Information Branch,  
Health and Welfare Canada,  
12th Floor,  
Brooke **Claxton** Building,  
Tunney's Pasture,  
Ottawa, Ontario,  
**K1A 0K9**  
Phone: (613) 957-0721

DATA COLLECTION METHOD:

For the indicator Pensioners by Benefit Type: SPA, GIS and OAS Recipients by Community, data was supplied by Health and Welfare Canada through its Postal Code Request System.

For the indicator Total GIS and SPA Recipients and Dollars Paid, data was taken from the Health and Welfare Canada publication Monthly Statistics, Income Security Programs.

DATA RELIABILITY AND VALIDITY:

For the indicator Pensioners by Benefit Type: SPA, GIS,



and OAS Recipients by Community, "**snap-shot**". reports are provided for the number of recipients in December and June. Data for December 1979 and December 1981 is not available.

This data is compiled on the basis of postal code areas and, as **Paulatuk** did not obtain a postal code until 1984, information on **Paulatuk** is included in **Inuvik's** totals prior to that date. The data does not include information on those whose applications are refused, nor does it account for those people who may choose not to apply. Also excluded are those recipients for whom the postal code of residence is not available, and those paid by the Canada Pension Plan ('melded' accounts) or paid under International Social Security Agreements.

OAS, GIS and SPA benefit rates are adjusted quarterly in accordance with changes in the Consumer Price Index. Entitlement to GIS and **SPA** benefits depends on the amount of income received from other sources during the previous year.

For the indicator Total **NWT** GIS and SPA Recipients and Dollars Paid the dollar amount indicated is the net total for the entire **NWT** and the number of recipients are fiscal year averages.

ISSUE:

Family Life

INDICATORS:

Child Neglect Complaints

SOURCE :

Department of Social Services,  
Government of the NWT

CONTACTS:

Regional Superintendent,  
Department of Social Services,  
Government of the NWT,  
**Inuvik**, NWT,  
XOE OTO  
Phone: (403) 979-7222

Regional Superintendent,  
Department of Social Services,  
Government of the NWT,  
Cambridge Bay, NWT,  
XOE OCO  
Phone: (403) 983-2148

DATA COLLECTION METHOD:

Reports are compiled manually by the NOGAP Researcher using the Department of Social **Services** records.

DATA RELIABILITY AND VALIDITY:

Data for this indicator is based on a calendar year report period. The information is obtained from a monthly case workload review form which is filled out by each social worker. These figures are subject to human error.

The term "Child Neglect **Complaint**" is subjective as each social worker interprets a child neglect complaint somewhat differently. Due to these problems **this** indicator has **limited** value as a **valid** measure of child neglect.

ISSUE :

Family Life

INDICATORS:

- Children in Care By Personal Data (Part A) ;
- Children in Care By Personal Data (Part B) ;
- Children in Care By Personal Data (Part C) ;
- Children in Care By Current Legal Status; and
- Children in Care By Placement and Plan.

SOURCE :

Child Welfare System,  
Department of Social Services

CONTACT:

Superintendent of **Child Welfare,**  
Department of Social **Services,**  
Government of the **N.W.T.**  
**Yellowknife, N.W.T.**  
XIA 2L9  
Phone: (403) 873-7709

DATA COLLECTION METHOD:

A computer program extracts data from the Child Welfare System and the information is manually entered into the NOGAP system.

DATA RELIABILITY AND VALIDITY:

Data contained in the Child Welfare System is captured from an "Intake Form - Children Admitted to Care of Supervision" or an update form if subsequent changes in a child's status are being documented. These forms are completed by Social Service staff and are forwarded to Yellowknife where they are data entered according to the child's Health Care Plan number. Monthly reports are produced which allow the examination of seasonal variation and aggregation of annual totals.

The Child Welfare system has been in place since 1981 but little historical information is available with respect to individual case histories as the system only recalls the last three changes in a child's status. Earlier records are destroyed as the system is updated.

Errors in the data reported may arise due to a number of reasons. **Childrens'** names may change as they go to live with other relatives. There is a possibility that some children may have been assigned more than one health care number or a different birthdate.

DEFINITIONS :

Issue: Family Life

The Child Welfare System is called FAMS (Family System) .

Indicator: Children in Care by Current Legal Status

Apprehension - The action taken by a community social **service** worker to remove a child from the care and custody of his/her parents, caretaker or **guardian**.

Supervision - A **child is** taken into care or custody under the **supervision** of the Superintendent of Child Welfare. The **child** may stay **with family during this** period, but **is** still under the supervision of the Superintendent of **Child** Welfare.

Temporary Ward (C.W.O.) - As described in the Child Welfare Ordinance (CWO), a child is taken into care or custody and is made a temporary ward of the court for a time period not exceeding twelve (12) months.

Permanent Ward - A child is made a permanent ward of the court until he/she reaches the age of eighteen (18).

Temporary Ward (J.D.A) - As defined in the Juvenile Delinquents Act (which has been replaced by the Young Offenders Act), a **child** judged to be **in** a state of delinquency **is** made a **temporary** ward of the court.

Juvenile Probation - A **child** (ages 12-18 as defined in the Y.O.A. Act) who has been found **guilty** by the court for an **offence** committed is subject to **supervision** by a Probation Officer.

Non-Ward Care (now termed Custody by Agreement) - An agreement made between the parents or guardians of a child and a Social Worker where the child is taken into

**care** for a temporary period of time. As a part of the agreement, the parents are responsible for contributing financially to the care of the child. Non-Ward Care may occur if the parents are living in the bush or hospitalized and the child requires temporary care during their absence.

Indicator: Children in Care and Placement Type

Free Foster Home - The Foster Home does not receive a per diem **to** cover the care of the **child**.

Fort Smith Centre (**Trailcross**) - A treatment centre for children with behavioral problems.

Own Resources - A child has found his/her own means of placement.

**A.W.O.L** - The child is away without leave permission from the social worker.

**Non-D.S.S. Institutional** Care - A **child is** placed in a **treatment** centre outside of the NWT for behavioral or medical reasons or due to a handicap.

Other - A child is placed in a bush camp, etc., under the **supervision** of the Superintendent of Child Welfare.

ISSUE:

Family Life

INDICATORS:

Families in Private Households and Private Households  
by Number of Persons and Families

SOURCE :

Census Canada  
Statistics Canada

CONTACT:

Bureau of Statistics, or Statistics Canada  
Government of the NWT, call collect: 420-3027  
**Yellowknife**, NWT,  
XIA 2L9  
Phone: (403) 873-7147

DATA COLLECTION METHOD:

Information is extracted from the report "Selected  
Population, Dwelling, Household and Census Family  
Characteristics, for Census Divisions and **Subdivisions,**  
**1981**" and the 1976 Census.

DATA RELIABILITY AND VALIDITY:

Census Canada data is produced once every five years.

Census data is randomly rounded up or down to protect  
confidentiality. For example, if 5 type X houses are  
listed, in reality there are between 1 and 9 type X  
houses. In small communities, this rounded figures  
could seriously distort the actual figures.

Some categories changed between the 1976 and 1981  
census. The data collection form reflects the changes  
made in the collection of census information.

ISSUE:

Education

INDICATOR:

Continuing Education Course Options

SOURCES:

**Native Womens Association** of the NWT  
**Inuvik, NWT**

Department of **Education**  
**Inuvik, NWT**

**Arctic College**  
**Fort Smith, NWT**

CONTACTS:

Training Centre,  
Native Women's Association of the NWT,  
PO **Box** 1064,  
**Inuvik, NWT,**  
XOE OTO

**Adult Education Centre,**  
Department of Education,  
G.N.W.T. ,  
**Inuvik, NWT,**  
XOE OTO

Registrar,  
Arctic College,  
**P.O.** Box 5  
Fort Smith, NWT,  
XOE OPO

DATA COLLECTION METHOD:

Information is received from the sources on a yearly basis.

DATA RELIABILITY AND VALIDITY:

In some cases the enrollment and completion records for courses offered through the organizations outlined above were not available.

The Native **Women's** Association accepts students from **Aklavik,** Arctic Red River, Fort Franklin, Fort Good Hope, Fort McPherson, Fort Norman, **Holman,** Inuvik, Norman Wells, **Paulatuk,** Sachs Harbour and Tuktoyaktuk.

Courses are offered in Inuvik but the students are from the communities identified. The low completion rate in 1986 can be attributed to the length of the courses being extended to twelve weeks from courses of shorter length. This often makes it quite difficult for students from communities outside of Inuvik to stay for the complete duration of the course.

The difference between **pre-employment** and academic courses is that **pre-employment** courses have the specified goal of training the individuals taking the courses for employment in a given field. Academic courses are not job specific but rather upgraded academic qualifications quite often help in obtaining employment in any field.

DEFINITIONS :

Arctic College includes the following courses under the three categories used in this indicator:

**Academic:** English as a second **language**, Basic Job Readiness Training and Basic Training and Skills Development.

**Pre-employment:** receptionist, heavy equipment operator, basic office practice, welding, mechanics, carpentry, cooking, nautical, and clerical.

**Other:** Class 5 drivers, guide development, bookkeeping, career orientation and 4th class engineer.



ISSUE:

Education

INDICATORS:

Enrollment by Grade, **Ethnicity** and **Sex**;  
Attendance by Grade, **Ethnicity** and **Sex**;  
Number of Teachers and Classroom Assistants;  
Student-Teacher Ratio; and  
Grade 12 Graduates by **Ethnicity** and **Sex**.

SOURCE :

Management Information **Systems**,  
**Department** of **Education**

CONTACT:

Manager,  
Management Information Systems,  
Department of Education,  
Government of the **N.W.T.**  
**Yellowknife, N.W.T.**  
XIA 2L9  
Phone: (403) 873-7356

DATA COLLECTION METHOD:

A report is supplied by the Department using figures generated by their Management Information Systems.

DATA RELIABILITY AND VALIDITY:

Enrollment data is tabulated in September, attendance figures at the end of each semester, and the number of teachers and classroom assistants in August.

The Alberta Department of Education is responsible for marking all Grade 12 departmental exams, recording the marks and forwarding the transcripts to the Department of Education, Government of the Northwest Territories in **Yellowknife**. As a result, data collection for grade

twelve graduates is not completed until the end of October when the transcripts are received.

All education statistics are collected on a school year basis (September to June) and, since 1979, have been stored on computer. Separate figures are provided for each school.

From 1979 to 1983 ethnicity was recorded as "Indian", "Eskimo", **"Metis"** or "Other". In 1984 "Indian"<sup>f</sup> was replaced with **"Dene"** and **"Eskimo"** with **"Inuit"**. In 1985 **"Other"** was replaced with **"Non-native"**.

There are some limitations to the reliability of enrollment and attendance data. If a student starts late or is transferred from another school he is not enrolled until attendance data is collected at the end of the semester (rather than in September). Drop-outs **are** accounted for in attendance records, however the enrollment figures do not change. These figures are subject to human error.

ISSUE:

Education

INDICATORS:

Primary School Course Options; and  
Secondary School Course Options

SOURCE :

Department of Education

CONTACTS:

Regional Superintendent, <b>Department</b> of Education, Government of the NWT, <b>Inuvik</b> , NWT, XOE OTO Phone: (403) 979-7130	Regional Superintendent, Department of Education, Government of the NWT, Cambridge Bay, NWT, XOE OCO Phone: (403) 983-2137
---	---

DATA COLLECTION METHOD:

**Information** was compiled by the source.

DATA RELIABILITY AND VALIDITY:

**This** data refers to the courses offered in the communities identified from 1979 to 1986. The nature of some courses and programs has changed considerably during the period covered by the study. For example the special needs program in 1980 was a very limited one due to lack of resources. **This** program has subsequently been enlarged.

In the 1985/86 school year a **Senior** Practical Program was implemented at Samuel Hearne Senior Secondary School in Inuvik. **This** is an alternative program; it is not a credit based high school program and does not lead to graduation with a high school diploma.

A Vocational Certificate Program is also offered at Samuel Hearne **Senior** Secondary School. **This** program offers three options including business, auto mechanics and carpentry. Upon graduation from **this** program students receive a **Northwest** Territories Vocational Certificate and a high school general diploma.

ISSUE:

Education

INDICATOR:

Education Levels by Selected Characteristics for People  
15 Years of Age and Over

SOURCE :

Census Canada,  
Statistics Canada,

CONTACT:

Bureau of Statistics,            or Statistics Canada  
Government of the NWT,        **call collect:** 420-3027  
**Yellowknife**, NWT,  
XIA 2L9  
Phone: (403) 873-7147

DATA COLLECTION METHOD:

Information is extracted from "Selected Population,  
Dwelling, Household and Census **Family** Characteristics,  
for Census **Divisions** and **Subdivisions**, 1981".

DATA RELIABILITY AND VALIDITY:

Census Canada data is produced once every five years.

Census data is randomly rounded up or down to protect confidentiality. For example, if 5 type X graduates are listed, in reality there are between 1 and 9 type X graduates. In small communities, this rounded figure could seriously distort the actual figures.

ISSUE :

Health

INDICATOR:

Industrial Accidents by Subclass, Severity and Type

SOURCE :

**Workers'** Compensation Board

CONTACT:

Administrative Assistant,  
Workers Compensation Board, (WCB)  
Yellowknife, NWT,  
XOE 1HO  
Phone: (403) 920-8726

DATA COLLECTION METHOD:

Computer printouts containing data on Industrial Accidents by Subclass, Severity and Type are supplied by the Workers Compensation Board.

DATA RELIABILITY AND VALIDITY:

The data is based on a calendar year period and is presented on an annual basis in this report, although monthly figures are available. The amount of work time lost, the type of industry in which the worker was employed and the type of injury incurred as a result of the industrial accident is indicated.

This indicator is only as reliable as the reporting process. Both the employee and the employer are required to report industrial accidents to the Workers Compensation Board. This data does not include claims which are disallowed by the Workers Compensation Board.

The Workeris Compensation Board does not have jurisdiction over all industries in the NWT. For example the federal government and crown corporations are excluded.

The industry class codes have changed over the years. Each **years'** class codes are as follows:

**1987:**

**Class 1:** Renewable Resources Industries  
**Class 2:** Mining  
**Class 3:** Oil and Gas Industries  
**Class 4:** Construction  
**Class 5:** Transportation, Communications and Utilities  
**Class 6:** Trades  
**Class 7:** Services  
**Class 8:** Public Administration and Defense

**1986 and 1985:**

**Class 1:** Renewable Resources Industries  
**Class 2:** Non-Renewable Resources Industries A  
**Class 3:** Non-Renewable Resources Industries B  
**Class 4:** Construction  
**Class 5:** Transportation, Communications and Utilities  
**Class 6:** Trades  
**Class 7:** Services  
**Class 8:** Public Administration and Defense

**1984:**

**Class 1:** Renewable Resource Industries  
**Class 2:** Non-Renewable Resource Industries A  
**Class 3:** Non-Renewable Resource Industries B  
**Class 4:** Construction  
**Class 5:** Transportation, Communications and Utilities  
**Class 6:** Trades and Related Services, Not Elsewhere Specified  
**Class 7:** Services, Not Elsewhere Specified  
**Class 8:** Public Administration and Defense

**1983:**

**Class 1:** Renewable Resource Industries  
**Class 2:** Non-Renewable Resource Industries  
**Class 3:** Manufacturing  
**Class 4:** Construction  
**Class 5:** Transportation, Communications and Utilities  
**Class 6:** Trades and Related Services, Not Elsewhere Specified  
**Class 7:** **Services**  
**Class 8:** Public Administration and Defense

**1982 and 1981:**

**Class 1:** Renewable Resource Industries

Class 2: Non-Renewable Resource Industries  
Class 3: **Manufacturing**  
Class 4: Construction  
Class 5: Transportation, Communications and Utilities  
Class 6: Trades and **Related Services, Not Elsewhere Specified**  
Class 7: Services  
Class 8: **Public Administration** and Defense

1980:

Class 1: Resource Industries A  
Class 2: Resource Industries B  
Class 3: Manufacturing  
Class 4: Construction  
Class 5: Transportation, Communications and Utilities  
Class 6: Trades  
Class 7: **Services**  
Class 8: Public Administration and Defense

ISSUE :

Health

INDICATOR:

Therapeutic Abortions

SOURCE :

Health Insurance Administration System  
Department of Health

## CONTACT:

Chief,  
Health Insurance Administration,  
Department of Health,  
Government of the NWT,  
**Yellowknife**, NWT,  
X1A 2L9  
Phone: (403) 873-7714

DATA COLLECTION METHOD:

A report is provided by the source.

DATA RELIABILITY AND VALIDITY:

All data is stored in the Health Insurance System on the basis of fee code items as submitted by physicians who have been billing the **N.W.T. Medicare Plan**. Our data includes all abortions under the fee codes G-5 and G-6A.

These types of abortions are all "**by choice**" as opposed to spontaneous or natural abortions. This data is only presented as aggregates for the nine Beaufort Delta communities to protect medical confidentiality. The Department of Health records **ethnicity** as "**Inuit**", "**Indian**" and "**Other**" with Metis and Non-native people included in the latter.

Information is aggregated to include all communities in the NOGAP area. This was done in order to ensure confidentiality.



ISSUE :

Health

INDICATOR:

Number of **Doctor Positions**

SOURCE :

**Department of Health**

CONTACT:

Program Policy Officer,  
**Department** of Health,  
Government of the N.W.T.,  
**Yellowknife, N.W.T.**  
XIA 2L9  
Phone: (403) 873-7748

DATA COLLECTION METHOD:

NOGAP is provided **with**a report by the Department of Health.

DATA RELIABILITY AND VALIDITY:

The indicator only refers to the number of person years approved for doctor positions per fiscal year. These doctors all work at the Inuvik General Hospital which is administered by Health and Welfare Canada, but the Government of the **N.W.T.** is responsible for hiring doctors. The number of doctors actually employed at the hospital during a given year is much higher than the number of doctor positions due to a rapid turnover of staff, the need for staff holiday relief, etc.

ISSUE:

Health

INDICATORS:

Infant Birthrate by Mortality and Ethnicity;  
Active Treatment by Patients and Services Provided;  
Cause of Death by Category;  
Maternal Age Groups (10-14 and 15-19) ;  
**Hospital Services** and Nurse Positions;  
**Medivacs** by Type of **Flight**; and  
Sexually **Transmitted Diseases**

SOURCE :

**Health** Management Information System,  
**Health** and Welfare Canada

CONTACT:

Supervisor,  
Health Services **Unit**,  
Medical Services Branch,  
NWT Region,  
**Health** and Welfare Canada,  
Bag # 7777, **Yellowknife**, N.W.T.  
XIA 2R3  
Phone: (403) 873-7041

DATA COLLECTION METHOD:

Reports are received from the source.

DATA RELIABILITY AND VALIDITY:

All health indicators from **Health** and Welfare Canada are compiled and listed by calendar year **with** the exception of the number of patient and inpatient days under the **Hospital** Services indicator **which** is compiled and **listed** by **fiscal** year.

Under the indicator **Active Treatment** by Patients and Services Provided, **Arctic Red River** is included in **Fort McPherson** data and **Paulatuk** is included in **Inuvik** data. The Teenage **Maternal** Deliveries indicator includes stillbirths.

All data **is** retrieved from the **Health** Management Information System, HWC, and The Bureau of Vital

Statistics, **G.N.W.T.** Information respecting Sexually Transmitted Diseases is collected from the Regional Infectious Disease Control Unit in **Yellowknife**.

**It is** important to consider whether an increase (or decrease) in incidence of an identified pathology reflects an increased (or decreased) level of health care service when examining health related indicators.

Statistics for low birthweight infants do not distinguish between premature and full term babies.

Health and Welfare Canada records ethnicity as "**Registered Indian**", "**Inuit**", or "Other", the latter including both Metis and non-natives.

Cause of death refers to the primary cause of death.

Health and Welfare Canada records are very reliable and detailed. Data for some indicators goes back to 1954 yet a computerized Health Management Information System was only installed in 1982.

The indicators Maternal Age Groups and Infant Birthrate by Mortality and Ethnicity have been aggregated to include all of the communities in the NOGAP area. This was done in order to ensure confidentiality.

ISSUE:

**Mental Health**

INDICATOR:

**Suicide Attempts** by Age, Sex and Means

SOURCE :

Health and Welfare Canada

CONTACT:

**Mental Health** Coordinator,  
**Health** and Welfare Canada,  
**Inuvik**, NWT,  
XOE OTO  
Phone: (403) 979-3141

DATA COLLECTION METHOD:

Annual **reports** are received from the source.

DATA RELIABILITY AND VALIDITY:

Information is compiled *on* a calendar year report period from 1983 to present. The data is based on **Inuvik** Zone totals. The following communities are included in the indicator: **Aklavik**, Fort Franklin, Fort Good Hope, Fort McPherson, Fort Norman, **Inuvik**, Norman Wells, **Paulatuk**, Sachs Harbour and Tuktoyaktuk.

The number of attempted suicides is a difficult figure to quantify accurately as no formal reporting mechanisms are in place. Nursing stations report suicide attempts only when patients report the attempt to the nurse.

There is no data available for those communities without nursing stations or for the communities of **Holman** and Coppermine.

ISSUE :

Mental Health

INDICATOR:

Cause of Death by Suicide

SOURCE :

Medical **Services** Branch,  
NWT **Region**  
Health and Welfare Canada

CONTACT:

Supervisor,  
**Health Services Unit**,  
Medical **Services** Branch,  
NWT **Region**,  
**Health** and Welfare Canada,  
Bag #7777, **Yellowknife**, NWT,  
XIA 2R3  
Phone: (403) 873-7041

DATA COLLECTION METHOD:

Reports received from the source.

DATA RELIABILITY AND VALIDITY:

Information is aggregated to include all communities in the NOGAP area. This was done in order to ensure confidentiality.

ISSUE:

Crime and Public Justice

INDICATORS:

Admissions **to** NWT Correctional **Centres** by Reason;  
Intakes **to** Probation Services by Reason (**Part A: Probation**) ;  
Intakes to Probation Services by Reason (**Part B: Parole**);  
Males on Probation by Age and **Ethnicity**;  
Females on Probation by Age and **Ethnicity**;  
Males on Parole by Age and **Ethnicity**;  
Females on Parole by Age and **Ethnicity**;  
Male Admissions **to** TCC by Age and **Ethnicity**;  
Females Admissions **to** TCC by Age and **Ethnicity**;  
Disposition of Probationers; and  
Pre-sentence Reports and Community Assessments.

SOURCE :

CATCH System,  
Corrections **Division**  
**Department** of Social Services

CONTACT:

Program Research Officer,  
Corrections **Division**,  
Department of **Social** Services,  
Government of the N.W.T.,  
**Yellowknife**, N.W.T.,  
**X1A 2L9**  
Phone: (403) 920-8922

DATA COLLECTION METHOD:

A computer program extracts data from the Computer Augmented **Territories** Correction **History** System (**CATCH System**) and it is manually entered **into** the **NOGAP system** which produces reports.

DATA RELIABILITY AND VALIDITY:

**Data** extracted from the **CATCH System** is derived from the following **five** forms completed by Correction Centre staff:

- a) Probation and Parole Intake Form;
- b) **Territorial Correction Centre** Intake Form;
- c) **Territorial' Correction Centre** Closure Form;

- d) Territorial Correction Amendment Form; and
- e) Probation and Parole Closure Form.

The CATCH system produces reliable monthly, quarterly and fiscal year total reports with figures reported by region and correction facility. Ethnicity has been recorded as "Indian/Metis", "Inuit" and "Other" since April 1979 but information is available from 1977.

DEFINITIONS:

The term CATCH means Computer Augmented Territories Corrections **History**.

Indicator: Admissions **to** NWT Correctional Centre by Reason

Against Persons - Includes all **offences** causing bodily harm, ie. sexual, aggravated, with/without a weapon, battery.

**Against** Property - Includes all offences against an **individual's** property ie. breaking and entering, trespassing, destruction or damage of property.

Drugs - Includes all offences defined under the Narcotics Control Act, ie. **possession, trafficking**.

**Liquor** - Includes all **offences** that are alcohol related.

**Motor** Vehicle - **Criminal** negligence in the operation of a motor vehicle, ie. conviction for dangerous driving, driving while impaired, driving while disqualified, etc.

Other - Includes offences under the Immigration Transfer of Federal Inmates, or Securities Acts, etc.

Indicator: Males/Females on Probation by Age and **Ethnicity**

Probation - The system of **letting young** offenders, or first offenders, go free **without** "receiving the punishment which they are sentenced to unless there is a further offence.

Indicator: Males/Females on Parole by Age and Ethnicity

Parole - A conditional release from jail or prison before the full term **is** served.

Indicator: Male/Female Admissions to TCC by Age and **Ethnicity**

TCC - **Territorial** Correction Centre: **Yellowknife**, NWT

Indicator: Disposition of Probationers

**Disposition Type** - When an individual is found guilty of a crime, the court makes a decision on the sentence or type of punishment.

**Incarceration** - In some cases a probationer **is** imprisoned **if** he/she has **committed** additional crimes **while** on probation.

**Restitution** - The court orders the offender on probation to repay the **victims** for the loss or injury caused.

**Fine** - A sum of money set by the court that the probationer **must** pay as a **punishment for the crime** committed.

Community Service Order - An order of the court **which** requires an **individual** to work some hours **in his/her** community to help repay the community.

Indicator: Pre-Sentence **Report** and Community Assessments

**Pre-Sentence Reports** - The report **is** only prepared at the **direction** of a judge (after a **determination** of guilt). By preparing a pre-sentence report **prior** to a formal **finding** of guilt, the **trial** process is expedited.



ISSUE:

Crime and Public Justice

INDICATORS:

Crime by **Offence** Reported and Status:  
- Crimes of Violence;  
- Property Crimes;  
- Other Criminal Code **Offences**;  
- Restricted, Controlled and Other Drugs;  
- Other Federal Statutes, Territorial Statutes  
Municipal By-Laws and Total of all Offences; **and**  
- Supplementary Form

SOURCE :

Statistics Canada,  
Canadian Centre for Justice Statistics

CONTACT:

Statistics Canada,  
Canadian Centre for Justice Statistics,  
R. H. Coats Building, Room 19 M,  
Ottawa, Ontario,  
**K1A 0T6**  
Phone: (613) 990-6638

DATA COLLECTION METHOD:

**Computer** printouts are received on an annual **basis** from the *source*.

DATA RELIABILITY AND VALIDITY:

This data is presented on a calendar year basis for the periods 1979 to 1985 although the categories used for reporting some **offences** have changed since 1979. For instance, the term juvenile delinquent is no longer used by the courts. The laws which covered juvenile delinquents have been **completly** revised. Currently **The Young Offenders Act** covers most people previously considered to be juveniles.

Other statutes have also been changed or revised. A more detailed analysis of the changes and revisions is available from the source.

Information is compiled at the detachment level. Arctic Red River data is included in the Fort Mcpherson

Detachment's figures, **Paulatuk** data is included in the **Inuvik** Detachment's figures and **Holman** data is included in the Coppermine Detachment's figures.

The Uniform Crime Reporting System from which the information is extracted records solved and unsolved crimes reported by the police. Police record information that is received by telephone, through police observation, by personal report and through arrests.

DEFINITIONS:

1) Crime by Type of Offence Reported

There are six major categories of **offences**: Crimes of Violence; Property Crimes; Other Criminal Code Offences; Restricted, Controlled and Other Drugs; Other Federal Statutes, Territorial Statutes, Municipal By-laws and Total of All **Offences**; and Supplementary Form. The total of all offences refers to the grand total of all **offences** reported in the five categories under Crime by Type of Offence Reported. The Supplementary Form refers to changes made to the criminal code after 1983. Refer to the **Criminal Code** for the exact **definitions** of offences.

2) Status of Offence Reported

Reported or Known: This **category** includes actual **offences**, alleged offences and attempted **offences**. Where there is an offence in which several offenders are involved the offence is recorded only once. Offences not occurring in a single incident are counted separately. When several **offences** occur in the same incident the most serious offence is recorded. The "most serious **offence**" is defined as the most serious one as measured by the maximum penalty allowed by the law or the offence which the police consider most serious when the penalties are the same. Examples of offences that are not recorded are such **things** as **alarms** which have accidentally been set off, complaints of persons acting in a suspicious manner or routine searches of vehicles.

Unfounded: An incident is recorded as **"unfounded"** when a **police** investigation has established that a crime **did** not happen or was not **attempted**.

**Actual Number:** By subtracting the figures under **"Unfounded"** from those under 'Reported or Known', the actual number of offences **is** determined.

Offences Cleared: **An** offence is cleared by charge at the time that the charge is laid against at least one person. Offences, not the number of persons **charged are** counted. One person might be charged with a number of **offences** or several persons might be charged with one offence.

**Offences** are cleared under the **category** of **"other"** when the police are not able **to clear** the offence by charge although the offender has been **identified** and there **is** sufficient evidence **to** support the laying of charges. Situations where an offence can be cleared under **"other"** include the following: the offender has **died**; the offender has been committed to a **mental** hospital and it **is unlikely that he or she will be** released; or the offender has **committed** more than one **offence with the** offences **having** occurred at different times, **locations** and circumstances and **it has been** decided to charge **him with** only one of the most serious because no useful purpose would be served by proceeding **with** the other charges.

Persons Charged: This information pertains to adults and juveniles charged with crimes and classified by gender. Until 1984, an adult was classified as any person over the age of twenty-one while a juvenile was considered to be any person under the age of twenty-one. In practice, whether one was charged as an adult or juvenile was a matter of discretion.

Since the Young Offenders Act was introduced in 1984 a young offender has been classified as any person between the ages of twelve and seventeen or as directed by the court. When an adult is simultaneously charged with more than one offence and when the offences occur over a **period of time**, the persons data **is** scored only once against the most **serious** offence but the other offences are shown as cleared by charge.

Not Charged: This includes cases where it was decided not to press charges.

DEFINITIONS:

**Bankruptcy Act** - The primary purpose of the act is to permit an honest, but unfortunate debtor to obtain a discharge from his debts subject to reasonable conditions. The Statute was enacted in order to provide for the orderly distribution of the properties of a bankruptcy among his creditors.

**Customs Act** - An act that regulates taxes **paid** to the **Canadian** Government on **items** imported or brought in from a foreign country.

**Excise Act** - An **act** that regulates a tax on the manufacture, sale or use of certain articles, made, sold or used within Canada.

**Immigration Act** - An act respecting the immigration of individuals, who are not Canadian citizens, into Canada.

**Juvenile Delinquent Act** (replaced by **Young Offenders Act**) - An **act to** ensure that young persons (ages 7-21 inclusive) should be held accountable for **their behaviour in** a manner appropriate to **their** ages.

**Territorial Ordinances:** (The Yukon and Northwest Territories only have legislative authority to pass ordinances and not acts) .

**Liquor Ordinance:** An ordinance that regulates the sale and distribution of liquor in the Northwest Territories.

**Municipal By-Law** - A law made by a municipality or community council to regulate the actions of residents.

ISSUE :

**Crime and Public Justice**

INDICATORS:

- RCMP **Community Services**;
- Alcohol Use/Abuse

SOURCE :

Operational Statistics Reporting System,  
Royal Canadian Mounted Police

CONTACT:

Royal Canadian Mounted Police,  
**G Division,**  
Bag #5000,  
**Yellowknife, NWT,**  
**X1A 2R3**  
Phone: (403) 920-8311

DATA COLLECTION METHOD:

Computer printouts are received on an annual **basis** from the source.

DATA RELIABILITY AND VALIDITY:

**This** information **is** extracted from "**The R.C.M. Police Operational Statistical Reporting System**". The figures are calendar year totals. Records for most of the data under **this indicator** have been kept **since** 1982.

Information **is** compiled at the detachment level. **Arctic Red River** data **is** included in the **Fort McPherson** Detachments figures, **Paulatuk** data **is** included in the **Inuvik Detachment's** figures and **Holman** data **is** included in the **Coppermine** Detachment's figures.

The alcohol use/abuse **statistics** reflect the number of crimes where alcohol was regarded, by the RCMP, to be a contributing factor. People who were charged directly **with** an alcohol offence are not captured by **this** indicator; the figures are available elsewhere.

ISSUE :

Young Offenders

INDICATOR:

Young Offenders **Act**: RCMP **Community Relations**

SOURCE :

Royal Canadian Mounted **Police**

CONTACT:

Royal Canadian Mounted **Police**,  
G Division,  
Bag # 5000,  
**Yellowknife**, NWT,  
**X1A 2R3**  
Phone: (403) 920-8311

DATA COLLECTION METHOD:

Computer printouts are received on an annual **basis** from the source.

DATA RELIABILITY AND VALIDITY:

This information is extracted from "The **R.C.M.** Police Operational Statistical Reporting **System**". The figures are calendar year totals. A more detailed report is available from the RCMP upon request.

Information is compiled at the detachment level. Arctic Red River data is included in the Fort McPherson Detachments figures, **Paulatuk** data is included in the **Inuvik** Detachment's figures and **Holman** data is included in the **Coppermine** Detachment figures.

The Young Offenders Act has only been in existence since 1984. Prior to this date some young offenders were considered to be juvenile delinquents. The category of juvenile delinquent could be used to cover children as well as adolescents. The Young Offenders Act only covers people between the ages of twelve and seventeen.

ISSUE :

Housing

INDICATOR:

Northwest Territories Housing Corporation (NWTHC)  
Government of the Northwest Territories (GNWT), Federal  
and Private Housing by Ownership and Type of Unit.

SOURCE :

Department of Municipal and Community Affairs, GNWT

CONTACT:

Senior Assessment Technician,  
Assessment Division,  
Department of **Municipal** and Community Affairs,  
Government of the NWT,  
**Yellowknife**, NWT,  
**X1A 2L9**  
Phone: (403) 873-7340

DATA COLLECTION METHOD :

Information for **GNWT**, Federal and Private housing is extracted from the "Residential Assessment Record" or assessment cards **which** are updated annually by the source. GNWT housing data was checked against a housing inventory provided by the Department of Personnel, **GNWT**. Information for the NWTHC was **obtained** from a "**Capital Assessts Inventory Report**" which was published for the first **time in 1986**.

DATA RELIABILITY AND VALIDITY:

The "**Residential Assessment Records**" from which this information was extracted were not designed to be used **as** an inventory of housing type by ownership. The figures should only be used as a rough guide to the housing situation in each community as the problems listed below affected the count in each community.

In some cases commercial and industrial buildings were zoned as residential. Conversely some stores or industrial **buildings which** are partially used as residences were not scored as residences; they were zoned as commercial. As only residences were counted **in** the survey **this** affected the total. An example of places used as residences that were not counted include the bunkhouses used by oil and gas exploration companies **in** Tuktoyaktuk and apartments above stores **in Inuvik**. **With** trailers **it** was impossible to **tell** the year that the trailer was moved to the lot as only the year that the trailer was **built is** recorded.

**Vacant** houses were included **in** the total **in** cases where the assessment records **did not indicate** that houses were vacant. The 'Assessment Roll', an ongoing record of the amount of **taxes** owed on each property, was used to **verify** the accuracy of the data. As can be noted by comparing the **ownership** figures obtained from the "**Assessment Roll**" as opposed to the 'Assessment Records'<sup>f</sup> some discrepancies exist. The discrepancies are probably the result of some **properties being** incorrectly categorized in terms of ownership or zoning.

Another factor **affecting** the reliability of the data **is** that detailed assessments are not done every year. Consequently when qualitative changes are made to the house they are not necessarily documented. **Data for Inuvik is** presented **in a different** format because a detailed **survey** was done in 1985 **in which** new forms were used. The definitions **in** the section below were obtained from the "Assessment **Manual**" produced by the Government of Alberta in 1967. The definitions for poor and **fair quality** homes were taken from the updated "Assessment **Manual**", 1984. All classifications are made at the discretion of the assessor with the following definitions being used as guidelines.

#### DEFINITIONS :

Economy Dwelling: An economy dwelling can range in **size** from 12'x 18' to 20'x 30'. **This is similar** to the size of a one storey house with the main difference **being** the **quality** of the building. **It is** often difficult for the assessor to determine **if** the dwelling is used as a residence or for storage of goods. Consequently some of the units under **this** category **might** not be correctly classified.



One Storey House: These residences can range in size from **18'x 20'** to **30'x 40'**. One and one half storey residences are included under this category.

Two Storey House: These two storey residences can range in size from **18'x 20'** to **36'x 70'**.

Poor and **Fair** Quality Houses: The descriptions used under the category of poor **quality** include poor, economy and sub-standard. Under fair **quality** the description includes **fair**, standard and semi-custom. The description of the **quality** of a home was designed to apply to Alberta **built** homes. The criteria used to judge the quality of residences includes: size; structure; depreciation; workmanship; exterior **finish**; **window** area; heating systems and design.

ISSUE:

Housing

INDICATOR:

Housing **Associations'** Rental Revenues and Total Expenditures

SOURCE :

NWT Housing Corporation

CONTACT:

**District** Comptroller,  
NWT Housing Corporation,  
Government of the NWT,  
**Inuvik**, NWT,  
XOE OTO  
Phone: (403) 979-7243

DATA COLLECTION METHOD:

Information was obtained from financial statements as per an independent audit required of the Housing Associations by the NWT Housing Corporation every year.

DATA RELIABILITY AND VALIDITY:

From 1980 to 1984 the revenues and expenditures are reported for the year **ending** December 31. There are no consolidated financial statements prior to and **including** the 1982 financial statement. Consequently the Statement of Operations for **public** housing section 43 units, section **40-senior citizens units** and northern rental units are added up to arrive at the total for 1980, 1981 and 1982. After 1983 the financial statements were consolidated. **With** one exception financial statements covered a twelve month period; there was a fifteen month reporting **period** for 1986 ending March 31,1986.

One time operations such as construction or the purchase of supplies and equipment are not included in the totals. An example is that of the purchase of senior citizens furnishings in Fort McPherson in 1982.

The most current financial statements were used in determining revenues and expenditures. In some cases such as Sachs **Harbour** in 1980 and Inuvik in 1984

corrections were made to the original financial statement during the following year.

Generally the accounting principles used have remained constant over the reporting period. In some cases the certified general **accounting firm** was unable to express an opinion as to whether or not the financial statements presented a **fair** and accurate picture of a given Associations financial **position in light** of **serious** deficiencies **in** accounting records and **in** the Association's system of internal financial control. **This** was the case **with** the Tuktoyaktuk Housing Association in 1980, 1981 , and **1982**.

ISSUE :

Housing

INDICATOR:

**Social Housing Units** Required;  
Social Housing **Units** Available;  
**Public Housing Units** Constructed;  
Home Ownership Assistance **Units** Constructed;  
**Units** Deemed Substandard;  
**Senior Citizens** Units; and  
- Average Number of Persons Per Bedroom in **Public Housing Units**.

SOURCE :

Northwest Territories Housing Corporation (NWTHC)

CONTACT:

Capital Planner,  
Programs and Planning,  
Northwest Territories Housing Corporation,  
Government of the NWT,  
**Yellowknife, NW'T,**  
XIA 2L9  
Phone: (403) 873-7894

DATA COLLECTION METHOD:

An annual report **is** supplied by the NWTHC.

DATA RELIABILITY AND VALIDITY:

This information is only available for 1986.

**All** information on NWTHC housing stock is recorded according to standard criteria by Housing Corporation employees and **is** subject to human error. For example, the **quality** of a housing **unit is** recorded on a "**Housing Unit Condition Record**" and units are subsequently deemed acceptable or substandard.

In determining the number of **social housing units** required, the number of requests for housing are compared to the number of **housing units in each community**. This indicator refers to **the** units required in the upcoming year rather than the year indicated on the data collection form.

ISSUE:

Housing

INDICATOR:

Occupied Private Dwellings by Type

SOURCE :

Census Canada,  
Statistics Canada,

CONTACT:

Bureau of Statistics, or Statistics Canada  
Government of the NWT, call collect: 420-3027  
**Yellowknife**, NWT,  
XIA 2L9  
Phone: (403) 873-7147

DATA COLLECTION METHOD :

Information **is** extracted from "Selected Population, Dwelling, Household and Census Family Characteristics, for Census **Divisions** and **Subdivisions, 1981**" and the 1976 census.

DATA RELIABILITY AND VALIDITY:

Census Canada data is produced once every five years.

Census data **is** randomly rounded up or down to protect confidentiality. For example, if 5 type X houses are listed, **in** reality there are between 1 and 9 type X houses. In small communities, **this** rounded figure could seriously distort the actual figures.

Some categories changed between the 1976 and 1981 census. The data collection form reflects the changes made in the collection of census information.

ISSUE:

Alcohol and Drugs

INDICATOR:

Alcohol Projects by Type, Staff and Budget

SOURCE :

Department of Social **Services**,  
Government of the NWT

CONTACTS:

Program Specialist,  
Department of Social Services,  
Government of the NWT,  
**Yellowknife**, m ,  
**X1A 2L9**  
Phone: (403) 920-8005

Regional Consultant,  
National **Native** Alcohol  
and Drug Abuse Program,  
Health & Welfare Canada,  
**Yellowknife**, NWT,  
(403) 873-7044

DATA COLLECTION METHOD:

Reports are compiled through original research and extracted from Alcohol and Drug Coordinating Council Annual Reports.

DATA RELIABILITY AND VALIDITY:

**Financial** data **is** based on contribution agreements made between **individual** projects and NNADAP, Health and Welfare Canada and/or **GNWT**, Government of the **N.W.T.** Projects may have other funding sources not included **in** these figures, such as grants from the Canada Employment Centre and the Secretary of State.

Data **is** comparable by type of service offered and by amount of **NNADAP** or **GNWT** **funding** received, but not by staffing level as no **distinction is** made between part- and full-time positions.

DEFINITIONS:

## Residential Projects:

Involves detoxification, rehabilitation, recovery services, individual and group counseling, therapy, recreational activities, and extended care.

## Non-Residential Projects:

Individual or family counseling **is** provided for **individuals** or **families with** alcohol and drug related problems, on an outpatient **basis**.

## Diversionary Projects:

These projects are designed to provide non-alcohol related activities usually **in** the form of recreational and **social** alternatives to **divert** people **idle time**. These programs are usually youth oriented.

## Drop-In-Centre Projects:

An **education/information** program **which** provides counseling on a volunteer **basis**.

## Preventative-Education Projects:

These projects are designed to provide alcohol and drug information to residents, schools, agencies etc. The goal of these project types **is** to allow **individuals** to make responsible decisions on the use of alcohol and drugs.

## Treatment Centre Projects:

A non-medical **facility** that provides a twenty-eight (28) day rehabilitation program for alcoholics.

## Regulatory Projects:

Projects involved in regulatory practices usually are responsible for **administering** and regulating liquor orders under the **liquor** ordinance (**ie.** Hall Beach) .

## Outreach Projects:

For a **definition** please check **with** the sources.



ISSUE :

Alcohol and Drugs

INDICATOR:

Alcohol Sales by Type, Volume and Value

SOURCE :

NWT **Liquor** Commission,  
Government of the NWT

CONTACT:

Manager,  
Finance and **Administration**,  
NWT **Liquor Commission**,  
Hay **River**, NWT,  
XOE ORO  
Phone: (403) 874-2100

DATA COLLECTION METHOD:

Figures reported for the **Inuvik Region** were extracted from the NWT **Liquor Commission's** Annual Reports (1979-1983). **Mail** order sales invoices from the **Yellowknife Liquor** Store were examined in compiling data for the communities of **Holman** and **Coppermine**.

DATA RELIABILITY AND VALIDITY:

Information **is** based on a fiscal year reporting period. The NWT **Liquor Commission** does not require **its Liquor** Stores to report or keep a record of **mail** order sales by community. Data for **mail** order sales to communities **in** the **Inuvik Region** **is** not available. Secondly, alcohol purchased from the **Inuvik** Liquor Store may be consumed **in** any community.

Operation of the **Yellowknife** Liquor Store has been contracted out to private companies for several years. **Mail** order sales **invoices** for **Holman** and **Coppermine** before 1985 are not available. Alcohol purchased from other sources **is** not included **in** these figures.

ISSUE :

Community Participation and Leisure

INDICATORS:

- **Facility** Subsidy;
- Per **Capita** Grant; and
- Recreation Administration Grant

SOURCE :

Department of **Municipal** and Community Affairs,  
Government of the NWT

CONTACTS:

Regional Recreation Officer,  
Department of **Municipal** and  
Community Affairs,  
**Inuvik**, NWT,  
XOE OTO  
Phone: (403) 979-7253

Recreation Development Officer,  
Department of Municipal and  
Community Affairs,  
Cambridge Bay, NWT,  
XOE OCO  
Phone: (403) 983-2142

DATA COLLECTION METHOD:

Reports are supplied annually by the contacts.

DATA RELIABILITY AND VALIDITY:

This information has been compiled on a **fiscal** year basis since 1983-84. Before then funds were not administered in the same manner by the Department of Municipal and Community Affairs.

The Facility Subsidy is calculated by determining the recurring costs of an operation (such as maintenance, electricity, fuel, water\sewer) and costs associated with the supervision and operation of each facility. The Department then funds a percentage of the total costs .

The Per Capita Grant is based on population estimates for each community with five dollars being allocated for each person per fiscal year.

The Recreation Administration Grant is based on community status. A settlement receives three thousand dollars, a hamlet four thousand dollars and an incorporated municipality receives five thousand

dollars per **fiscal** year. As facility standards are based on population, **this** information should be of some help **in** interpreting expenditure. Operating and maintenance spending may **indicate** demand for and use of facilities. Changes **in** spending should not be examined without regard for changes **in** the type and **number of** recreation facilities available **in** each community.

The figures for **Inuvik** are only estimates based on an educated guess by the Department of Municipal and Community Affairs. The Department was unable to provide more accurate figures because funding provided by the GNWT for recreation facilities in municipalities is not separated from funding in other areas.

ISSUE :

Community **Participation** and Leisure

INDICATORS:

- Recreation Facilities by Type;
- Recreation Committees and Directors; and
- Recreation **Service** Expenditures and Revenues.

SOURCE :

Recreation Committees and Directors, Settlement and Hamlet Councils.

CONTACTS:

Recreation Committee members and Recreation Directors in each community, Settlement and Hamlet Councils.

DATA COLLECTION METHOD:

Reports are compiled by the NOGAP Researcher. Recreation revenues and expenditures are extracted from Settlement and Hamlet Councils' financial statements.

DATA RELIABILITY AND VALIDITY:

All non-financial information is compiled on a calendar year basis. The data has limited comparable value as each facility has unique features. The data indicates the existence of an actual physical structure. The age and condition of each facility is not monitored.

The availability of programs and **services** through each facility varies. Community use of facilities is not documented.

Recreation Committee members are volunteers while a Recreation Director is a salaried position. The presence of a Committee or Director does not necessarily indicate that a formal recreation program is in place.

Hamlet Councils prepare financial statements each fiscal year while Settlement Councils do so infrequently. The Town of **Inuvik** does not separate recreation expenditures and revenues from other financial data in their financial statements in the same manner as do hamlets and settlements; consequently **Inuvik** is not included in this indicator.

ISSUE:

Community **Participation** and Leisure

INDICATOR:

- Gambling by Type of License, Revenue Collected and Number of Events Reported; and
- Gambling by Type of **License** Issued and Gross Revenue Generated, NWT Totals

SOURCE :

Consumer **Services** Division,  
Department of Justice and **Public** Services,  
Government of the NWT

CONTACT:

Consumer Affairs Officer,  
Consumer Services **Division**,  
Department of Justice and **Public** Services,  
Government of the NWT,  
**Yellowknife**, m ,  
XIA 2L9  
Phone: (403) 873-7125

DATA COLLECTION METHOD:

Reports are manually compiled by the NOGAP Researcher **using** Consumer **Services** Division records.

DATA RELIABILITY AND VALIDITY:

Community data **is** extracted from two ledgers, one for the number of licenses **issued** and one for revenue. Lottery revenue records were not kept prior to 1982. The Consumer Affairs Section now tabulates these figures by **region** for each quarter but before 1986 only annual totals were tabulated. Records for the number of licenses issued go back to 1980.

A Statement of Accounts **giving** revenue figures for all gambling events held are required as part of the terms of the events license. Prizes exceeding \$100,000. must be accompanied by an **audit** statement. Consumer Affairs can request an **audit** statement whenever an event **is** licensed but **this** has not been done to date.

All figures are manually recorded and tabulated and are subject to human error.

DEFINITIONS:

Where zero figures are recorded under "**Revenue**", **this** indicates that the event **did** not show a profit.

Where N/R **is** recorded under "**Revenue**", **this** indicates that a Statement of Accounts has not been **received** and entered **into** the ledger.

ISSUE:

General

INDICATOR:

- Population Estimates 1980-85;
- and Population and Projections by Age, **Ethnicity** and Sex

SOURCE :

Bureau of Statistics,  
Government of the NWT

CONTACT:

Bureau of Statistics,  
Government of the NWT,  
**Yellowknife**, NWT,  
**X1A 2L9**  
Phone: (403) 873-7147

DATA COLLECTION METHOD:

Population figures are extracted from Census Canada reports and population estimates and projections are compiled by the Bureau of Statistics.

DATA RELIABILITY AND VALIDITY:

Census Canada population figures by age, **ethnicity** and sex are only produced every **five** years but the Bureau of Statistics, Government of the **N.W.T.** provides population estimates between census years. The formula used to prepare these estimates is: population = population at last date of census + **birth** - deaths + net migration estimate. **Birth** and death figures are provided by the Registrar General of **Vital** Statistics and net migration estimates are based on family allowance account transfers.

**Since** 1985 population projections have been available by age, ethnicity and sex from the Bureau of Statistics. Population projections for 1985 and 1986 are based on the 1981 Census. The population estimates, also extrapolated from the 1981 census do not provide a demographic breakdown by **ethnicity**, age and sex of area residents. Revised population projections and estimates are available quarterly so we advise you check with the Bureau for the most recent figures.

Non-status Indians are included under the **Dene/Metis** category of **ethnicity** for all figures since 1981. **Ethnic origin is** self declared.

ISSUE :

General

INDICATOR:

Demographic and Income Data

SOURCE :

Statistics Canada

CONTACT:

Bureau of Statistics,  
Government of the NWT,  
Yellowknife, NWT',  
X1A 2L9  
Phone: (403) 873-7147

or Statistics Canada,  
call collect: (403)  
420-3027

DATA COLLECTION METHOD:

**Information is** obtained from the report "**Urban Forward Sortation Area Rural Postal Code Summary Data**".

DATA RELIABILITY AND VALIDITY:

**This** information has **only** been collected since 1984 and **is** compiled according to postal code area.

**Median** total incomes are rounded to the nearest one hundred dollars. The Canadian **median** total **income** for those people reporting income was \$14,829.00 per person. The Canadian Index **listed** as an equation is  $\$14,829.00 = 100$ . For example, an **index** of 121 indicates that in that community the **median** total **income is 21% higher** than the Canadian median.



ISSUE:

General

INDICATOR:

Living Cost Differentials

SOURCE :

Prices Division,  
Statistics Canada

CONTACT:

Head,  
Isolated Post Unit,  
Government Allowances,  
Prices Division,  
Statistics Canada,  
Ottawa, Ontario,  
**K1A 0T6**  
Phone: (613) 990-9598

DATA COLLECTION METHOD:

Reports are received from the source.

DATA RELIABILITY AND VALIDITY:

Living Cost Differentials are calculated for the purpose of administering certain allowance **provisions applicable to federal government** employees **servicing** at locations designated as isolated under the Isolated Posts Directive. Price surveys of goods and **services** are conducted at each Isolated Post approximately every five years. Price data for this region is normally collected in January or February, usually a one day exercise.

Commodity coverage (i.e. product groups/services) is the same at each location but individual items (i.e. brands/sizes) may vary from community to community depending on availability. The range of goods and services encompassed by these indexes include food purchased from stores, household supplies and services, personal care supplies and services, public transportation, automobile operation and maintenance (including snowmobile operation), tobacco and alcohol. Approximately 225 items form the basis for the price

**survey.** The range of goods and services included in this measurement are subject to change through **time** so that results in one time frame may not be strictly comparable to results from different periods. These indexes also reflect purchases which federal employees make outside of their community including ordering and shipping costs.

Price collection in the "**base city**" is for identical items as found in the north (i.e. exact brand match) whenever possible. The "**base city**" refers to the city that is determined to be the major source of supply for that post. In our case it is Edmonton.

Results are provided in intervals of 10 points (except the minimum qualifying level which is a 15 point range) in accordance with the requirements of the Isolated Posts Directive.

This information has limited value as an on-going comparative measure of living cost differentials for each community because of the focus, scope and infrequent reporting periods as described above.

ISSUE:

General

INDICATOR:

Exploration Activities in the Mackenzie Delta Beaufort Sea

SOURCE :

Canadian Oil and Gas Lands Administration (**COGLA**)

CONTACT:

**COGLA** ,  
P.O. Box 1500,  
Yellowknife, NWT,  
XIA 2R3  
Phone: (403) 920-8175

OR

**COGLA** ,  
P.O. Box 2020,  
Inuvik, NWT,  
XOE OTO  
Phone: (403) 979-3006

DATA COLLECTION METHOD:

Information is extracted from the Canadian Oil and Gas Lands Administrations Annual Reports.

DATA RELIABILITY AND VALIDITY:

**COGLA** , which is responsible for the issuance, registration, transfer and administration of oil and gas exploration and production rights for frontier lands in the Mackenzie-Delta Beaufort Sea, has published annual Reports based on the calendar year since 1982. Only offshore activity is reported by **COGLA** .

While this is a **reliable and valid indicator of the extent of exploration** activities in the Beaufort Delta area, it only contains regional data and is not useful in assessing the level of development activity per community.

Some comparable information for the period 1976 to 1981 is available in annual reports entitled Oil and Gas Activities, published by Indian and Northern Affairs Canada.

ISSUE:

General

INDICATOR:

Mother Tongue

SOURCE :

Statistics Canada,  
Census Canada

CONTACT:

Bureau of Statistics,  
Government of the NWT,  
**Yellowknife**, NWT,  
**X1A 2L9**  
Phone: (403) 873-7147

or Statistics **Canada**,  
call collect: **(403)**  
420-3027

DATA COLLECTION METHOD:

Information is extracted from the report "Selected Population, Dwelling, Household and Census Family Characteristics, for Census Divisions and Subdivisions, **1981**" and the 1976 census.

DATA RELIABILITY AND VALIDITY:

Census Canada data is produced every five years.

Census data is randomly rounded up or down to protect confidentiality. For example, if 5 **people** are listed with Loucheux as their mother tongue, in reality there are between **1** and 9 people with Loucheux as their mother tongue. In small communities, this rounded figure could seriously distort the actual figures.

Some categories changed between the 1976 and 1981 census. The data collection form reflects the changes made in the collection of census information.

ISSUE:

General

INDICATOR:

Social Facilities and Programs

SOURCE :

Department of Social **Services**,  
Government of the NWT

CONTACTS:

Regional Supervisor-North,  
Department of Social Services,  
Government of the NWT,  
**Inuvik**, NWT,  
XOE OTO  
Phone: (403) 979-7109

Regional Supervisor,  
Department of Social  
Services, Government of  
the NWT, **Coppermine**, N.W.T.  
XOE OEO  
Phone: (403) 982-4901

DATA COLLECTION METHOD:

Annual reports are compiled by the NOGAP Researcher using Social Services records.

DATA RELIABILITY AND VALIDITY:

The reports are based on a calendar year report period. The information refers to the number of **available facilities and programs in each community.**

This indicator is not a measure of all programs and services offered through the Department of Social Services in each community.

Please note that Group Homes/Open Custody Facilities are used for holding youths under the Young Offenders Act and children under the Child Welfare Act. In 1986 the Group Homes/Open Custody Facilities category for **Inuvik** includes designated open custody homes. Wilderness camps are used solely for the detention of young offenders.

Extended care is available as a regular service in senior's homes but not in senior's apartments.