



Arctic Development
Library

***Nwt Transportation Study - Phase II
Presentation To The Steering Committee
Type of Study: Reference Material
Date of Report: 1989
Author: G.n.w.t. - Transportation
Catalogue Number: 9-5-256***

NWT TRANSPORTATION STUDY - PHASE II
PRESENTATION TO THE STEERING
COMMITTEE

Sector: Reference Material

9-5-256

Reference Material

CS

NWT GOVERNMENT LIBRARY



3 1936 00006 387 3

NWT TRANSPORTATION STUDY
PHASE II PRESENTATION
TO THE STEERING COMMITTEE

November 9, 1989

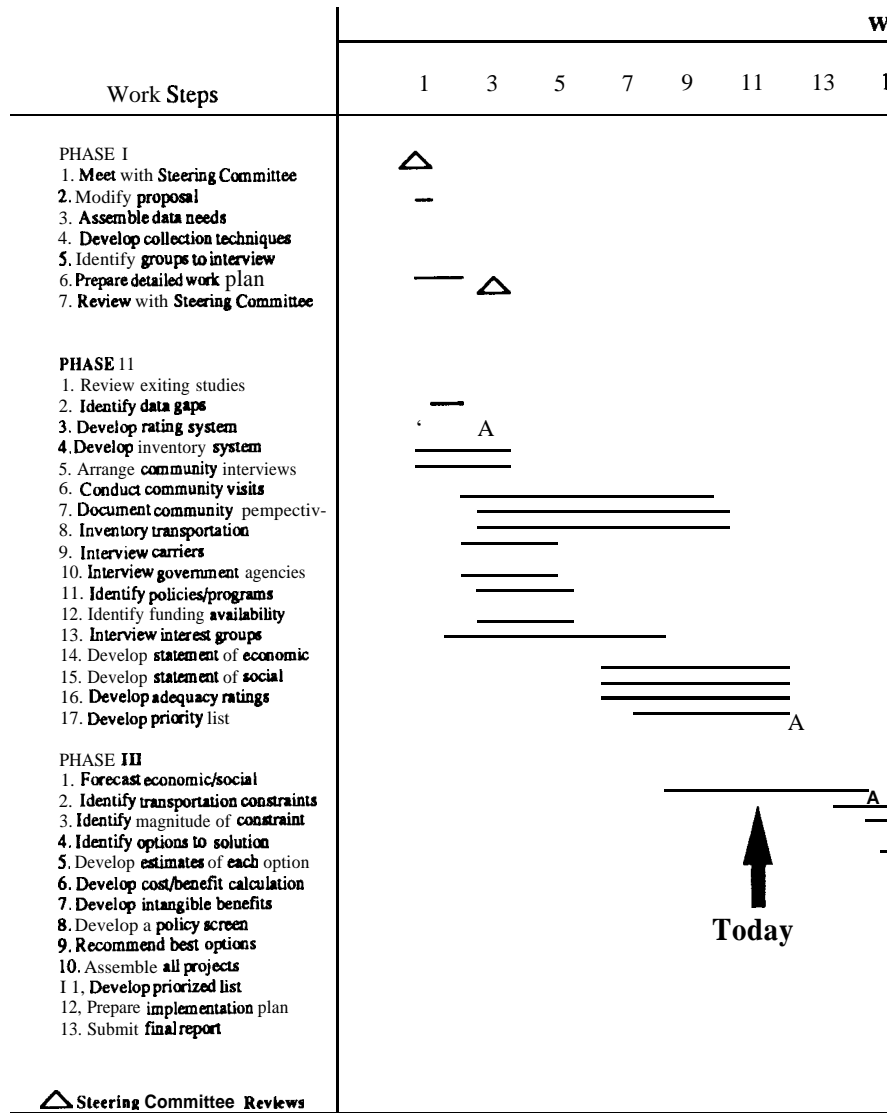
NWT
T
Nwt
1989

Government Library
Government of N.W.T.
Laing # 1
Yellowknife, N.W.T.
X1A 2L9

AGENDA

- Progress to date
- Community reports
- Issues arising from visits
- Other interviews and results
- . Transportation “wish list”
- . Transportation need rating mechanism
- . Proposed transportation projects for further analysis
- . Economic forecasting model progress
- Next steps

PROJECT SCHEDULE



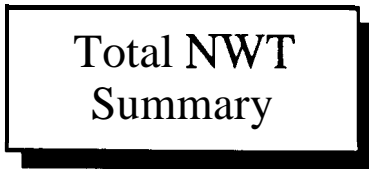
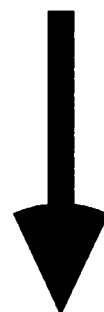
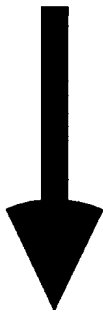
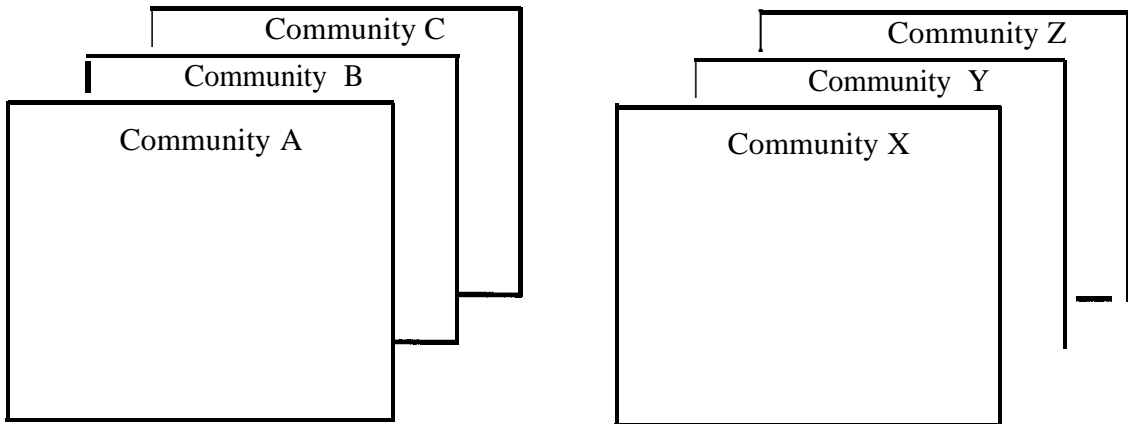
COMMENTS
Essentially on time
- Some revisions required to complete
- Economic forecasting ahead of schedule
- Other interest group interviews
January 26th Executive Summary objective

COMMUNITY REPORTS

Community Name: _____

- A. Overview
- B. Economic Base of the Community
 - 1. Current economic assets
 - 2. Potential economic development projects
- C. Social Base of the Community
 - 1. Current social situation
 - 2. Current issues
 - 3. Potential social issues
- D. Transportation Systems
 - Air
 - 1. Infrastructure
 - 2. Current volumes and services
 - 3. Community perspective
 - 4. Traditional native links
 - 5. Adequacy rating
 - Water
 - 1. Infrastructure
 - 2. Current volumes and services
 - 3. Community perspective
 - 4. Traditional native links
 - 5. Adequacy rating
 - Roads
 - 1. Infrastructure
 - 2. Current volumes and services
 - 3. Community perspective
 - 4. Traditional native links
 - 5. Adequacy rating
- E. Constraints

COMMUNITY REPORTS



REGIONAL SUMMARY

BAFFIN REGION -- ECONOMY

Background

Communities

Total	14
Air service	14
Sealift	14

1989 Population	10,800
1986 Average income	\$18,600

Economic Activity

- Strong dependence on **country** foods.
- Income from government, mining, arts and crafts, commercial fishing
- Trapping **insignificant!**

Economic Development Possibilities (20 year timeframe)

Commercial renewable resource harvests
Sealskin tannery (Broughton)
Tourism
Arts and crafts
Iron ore (Hall Beach)
Natural Gas (Melville Island)

BAFFIN REGION -- TRANSPORTATION ISSUES

Air

No significant infrastructure deficiencies
Requests for longer runways to handle larger aircraft
Improved terminal facilities

Water

Need wharves and/or protection for small craft
Iqaluit needs dock for possible fish processing plant

REGIONAL SUMMARY

KEEWATIN REGION -- ECONOMY

Background

Communities

Total	7
Air service	7
Sealift	7

1989 Population	5,400
1986 Average income	\$14,900

Economic Activity

- Strong dependence on country foods.
- Income from government, tourism, arts and crafts, commercial fishing
- Trapping insignificant

Economic Development Possibilities (20 year timeframe)

Commercial fishing
Tourism
Arts and crafts
Uranium mining
Gold mining

KEEWATIN REGION -- TRANSPORTATION ISSUES

Air

No significant infrastructure deficiencies
DND to upgrade Rankin Inlet
Terminal improvements underway in two communities
Requests for longer runways to handle larger aircraft

Water

Need wharves and/or protection for small craft

Roads

Requests for local roads for **tourism/hunting/fishing**
Requests for intercommunity winter or all weather roads
Requests for all weather road to Churchill

REGIONAL SUMMARY

KITIKMEOT REGION -- ECONOMY

Background

Communities

Total	6
Air service	6
Sealift	5

1989 Population	4,100
1986 Average income	\$17,200

Economic Activity

- Strong dependence on country foods.
- Employment from government, commercial fishing, arts and crafts
- Trapping insignificant

Economic Development Possibilities (20 year timeframe)

Commercial fishing (if additional reserves found)
Tourism
Base metal mining

KITIKMEOT REGION -- TRANSPORTATION ISSUES

Air

- Most airports need upgrading
- Requests for longer runways to handle longer aircraft
- Request fuel facility at Gjoa Haven

Water

- Urgent need for sealift dock at Gjoa Haven
- Dredging needed at **Coppermine**
- Need wharves and/or protection for small craft

Roads

- Requests for local roads for tourism/hunting/fishing
- Request winter road from **Coppermine** to **Yellowknife**

REGIONAL SUMMARY

INUVIK REGION -- ECONOMY

Background

Communities

Total	12
Air service	11
Barge access	9
All weather road	3
Winter road	4

1989 Population	7,900
1986 Average income	\$18,200

Economic Activity

- Declining dependence on country food.
- Income from government, services, tourism
- Trapping practised but incomes low.

Economic Development Possibilities (20 year timeframe)

Marten farming
Muskox harvesting
Pipelines
Tourism
Oil and gas

INUVIK REGION -- TRANSPORTATION ISSUES

Air

Arctic Red River has no airport
Relocation of several airports needed/requested
Tuktoyaktuk terminal building too small

Water

Aklavik needs barge docking facilities
Dredging needed at Fort McPherson
Wharves requested by most communities

Roads

Improved road maintenance wanted
Earlier construction of winter roads
Build winter road from Arctic Red River to Norman Wells
Connect Dempster and Mackenzie highways

REGIONAL SUMMARY

FORT SMITH REGION -- ECONOMY

Background

Communities

Total	18
Air service	17
Barge access	10
All weather road	10
Winter road	6

1989 Population	25,100
1986 Average income	\$23,000

Economic Activity

Traditional lifestyle dying away except in very small communities.
Income from government, communication and transportation, services, tourism
Trapping important in some small communities

Economic Development Possibilities (20 year timeframe)

Tourism
Base minerals
Pipelines

FORT SMITH REGION -- TRANSPORTATION ISSUES

Air

Requests for longer runways in small communities
Other airport improvements and realignment for economic and safety reasons

Water

Relocation of barge landing areas needed in some smaller communities
Community wharves requested by most communities

Roads

Need paving of road to Yellowknife
Extension of Mackenzie Highway to the Dempster
Repair of other local roads
Bridge crossings to replace ferries

INTERVIEWS WITH OTHER
GROUPS

GOVERNMENT

Federal
Provincial
Territorial
Regulatory

CARRIERS

Airlines
Truckers
Sealift Operators

MAJOR INDUSTRIES

Mining
Oil and Gas

CORPORATE AGENCIES

Chambers of Commerce
Industry Associations

In excess of 55 interviews
have been conducted;
summary report in preparation

OTHER INTERVIEWS

FEDERAL GOVERNMENT ISSUES

Devolution/Decentralize to NWT

- Southern Canada organization
- Northern Division

Financial Constraints

- User pay
- "Buy in" to project
- Economic justification

PROVINCIAL GOVERNMENT ISSUES

No major issues

Keewatin road/Churchill railway

Alberta supports completion of the Mackenzie Highway

TERRITORIAL GOVERNMENT ISSUES

- Constraints understood: socio-economic; demographic; geography; cultural; educational; environmental
- Projects identified:
 - . heal/community
 - . Regional/Mega projects
 - . Strategic planning
 - . Federal/Canadian attraction

REGULATORS' ISSUES

- Deregulation
 - . Applicable in NWT
 - . New procedure; GNWT and communities need to respond

OTHER INTERVIEWS

CARRIERS

Airlines:

- Current infrastructure not appropriate to optimize fleet utilization
- Airport planning criteria in high Arctic does not reflect aircraft operation
- Jet Combi optimizes operations and reduces transport costs (20-25%)

TRUCKERS

- Maintenance of existing highways
- Pave Enterprise to Yellowknife
- Interim improve Fort Providence north
- Gravel surface 30% increase in operating costs

SEALIFT

- **NTCL DEW** infrastructure issues
- Priority: Dredge Mackenzie River
- Eastern Arctic:
 - . Problems at Montreal
 - . Fleet needs replacement (24 yrs.)
 - . Larger vessels - RORO
 - . Upgrade landside for faster turnaround

OTHER INTERVIEWS

MAJOR INDUSTRIES

Mining

- Key is future price
- Postulated scenarios
- Best prospects:
 - Precious metals: Yellowknife to Lupin
 - Base metals: Izok

OIL AND GAS

- Key is future price/land claims and environmental issues
- Assume Mackenzie Valley Pipeline in medium term
- Can be built without road
- Do not construct pipeline and road at same time
- Future development of offshore gas then oil

CORPORATE AGENCIES

Chamber of Mines

- Written submission to be received
- Informal discussion agree scenarios

Chambers of Commerce

- NWT, Yellowknife and others
- Overview of prospects
- Written submissions to be received
- Small business perspective

Associations

- **Northern** Air Transport Association small operators
- Alberta and NWT Truckers confirm comments of large operators

WISH LIST

G. N. W. T. TRANSPORTATION

COMMUNITY	W						Airport Relocation	New Terminal
	DOCK		SMALL CRAFT					
	Barging or Sea Lift	Small Craft	PROTECTION & ACCESS		Refueling Facility	Ramp & Haul Out		
		Breakwater	Channel Improvement					
Iqaluit		Yes	Yes	Yes	Yes			
Pangnirtung		Yes	Yes	Yes		Yes	Yes	
Broughton Island			Yes	Yes				
Clyde River		Upgrading	Yes					
Pond Inlet		Yes	Yes			Yes	Yes	
Arctic Bay		Yes				Yes		
Resolute Bay			Yes					
Grise Fiord		Yes	Yes					
Pelly Bay						Yes	Yes	
Igloodik		Yes	Yes				Renovations	
Hall Beach		Yes	Yes					
Cape Dorset								
Sanikiluaq		Yes	Yes			Yes		
Lake Harbour		Yes				Yes	Yes	
Rankin Inlet		Yes					Expansion	
Baker Lake		Upgrading		Thelon R.			Cargo Area	
Coral Harbour		Yes	Yes			Yes		
Arviat		Expansion					Upgrading	
Whale Cove		Yes						
Chesterfield inlet		Completion						
Repulse Bay		Yes				Yes	Yes	
Nanisivik								
Inuvik	Relocate	Yes			Yes	Yes		
Paulatuk	Yes	Yes		Yes/Lights		Yes	Yes	
Tuktoyaktuk						Yes	Yes	
Sachs Harbour	Yes							
Holman Isl.								
Arctic Red River			Yes			Yes	New	
Aklavik		Yes	Yes			Yes		
Fort McPherson		Yes	Yes					
Norman Wells	Yes	Yes			Yes	Yes	Yes	
Fort Good Hope	Yes					Yes	Yes	
Colville Lake						Yes	Yes	
Fort Franklin						Yes	Yes	
Fort Norman	Yes							
Yellowknife								
Hay River		Yes						
Cambridge Bay								
Coppermine	Yes	Yes		Yes				
Gjoe Haven		Barge					Expansion/Carg	
Spence Bay		Barge					Expansion/Carg	
Fort Simpson	New bass	Yes		Yes		Close One		
Fort Liard		Relocate				Yes	Yes	
Jean Marie River							Yes	
Trout Lake							Yes	
Nahanni Butte		Relocate				Yes		
Wrigley		Relocate				Water		
Detah								
Fort Smith		Yes						
Fort Providence								
Fort Resolution								
Rae-Edzo		Yes				Yes	Yes	
Rae Lakes		Yes				Yes		
Snare Lakes						Yes		
Lac La Martre								
Snowdrift						Yes		
Enterprise								

« Float planes as well

© The Proctor & Redfern Group

+ Major bridge Required

^ Control of harbour by community

STRATEGYSTUDY - Summary of Community Desires

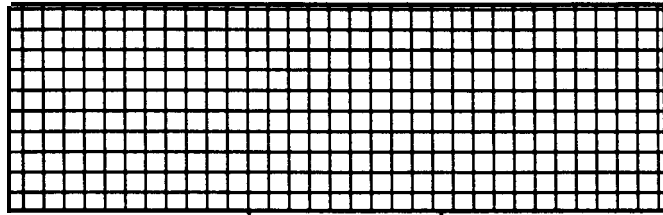
A I R				R O A D			S E R V I C E		
AIRPORTS				LOCAL	REGIONAL		IMPROVEMENTS		
Runway Extension	Runway Resurfacing	Runway Strengthening	Airport security	Outside Hamlet	Winter	All Weather	Air Passenger Service	Air Cargo	Sea Lift
				Yee					Yes
Yes				Yee			Yea	Yes	
Yea	Yea	Yee					Yee	Yee	
Cross Runway			Yes						
				Yee			Yee	Yea	
Yes				Yee				Yee	
				Yee					
			Yea	Yea	Yea		Yea	Yea	
				Yee					
Yee	Yes			Yea			Yee		
Cross Runway	Yea	Yee		Yes					
Yee							Yee	Yee	
				Yee	Yea	Yea	Yes	Yea	
Yee				Yea		Yea		Yes	
				Yee				Yea	
Yee				Yee	Yee	Yes	Yea	Yee	
Yee								Yes	Yes
			Yee	Yee					
				Reduce Grade*		Upgrade/Widen			
				Yes					Yes
	Yes		Yea	Yea		Yes	Yee	Yee	
Yee		Yee	Yes	Yea			Yes		
				Yee +			Yee		
Yea				Yea ++		Yee			
				Yee	Yee	Yee +			
			improve			Yea	Yee		
			Yee	Yes	Yee	Yes	Yes		Yes
Yee		Yee	Yes	Yea	Yea	Yee			
Yee			Yea	Yee		Yea	Yee		
		Yee		Yee	Yee	Yee			Yee
						Paving +			
						Paving			
	Yee			Yee			Yee	Yee	
Widening	Yee	Yea		Yee	Yee		Rate equity		
Yes	Yee			Yes			Yes	Yes	
Yee							Yee	Yes	
	Yee					Pave	Yee		
Yee				Yee		Pave	Yee		
Yee	Underway	Underway				Yee	Yee		
		Yee				Not Sure	Yea		
	Interim	Yee			Upgrade		Yea		
						Yee	Yee		
						Pave			
						Yee			
						Pave			
				Yee					
				Yee					
				Turning Lane		Pave			

* On Marine By-Pass Hill

++ Do Gravel Supply

A TRANSPORTATION RATING SYSTEM

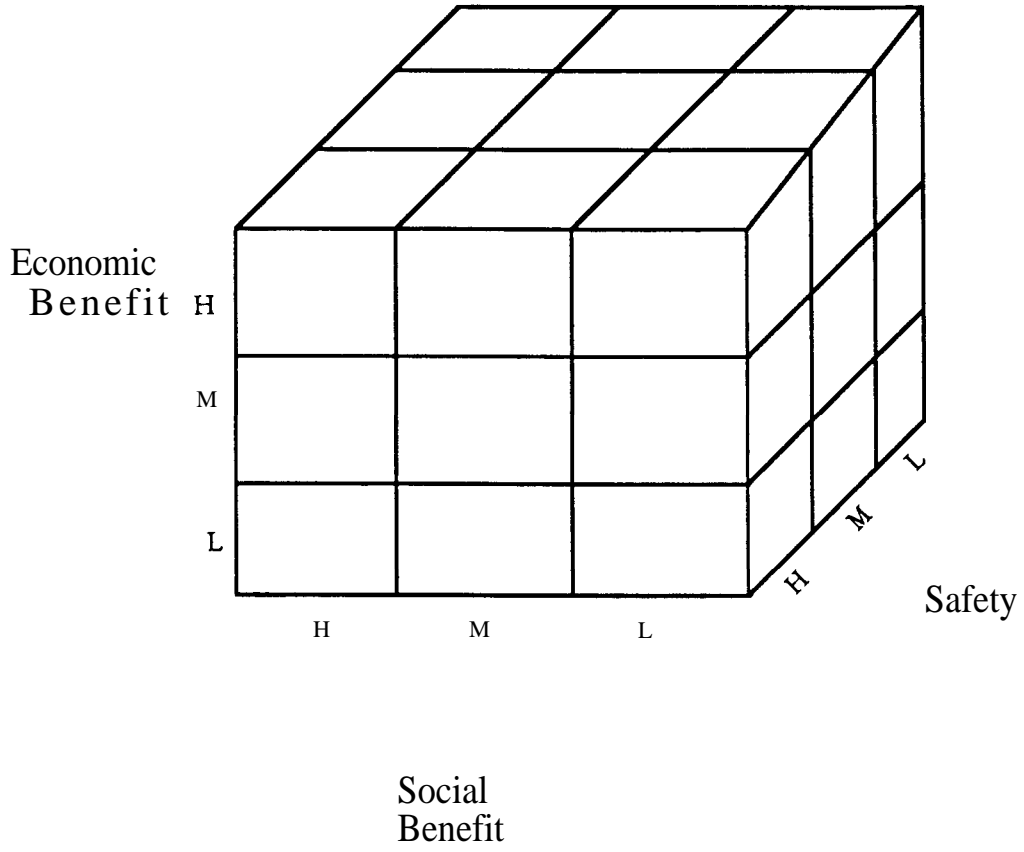
Transportation "Wish List"



LIST FOR
FURTHER ANALYSIS

We need a screen in order
to develop a list of projects
with merit

THESCREEN



K w R g

Community	Loca
Baker Lake	<ul style="list-style-type: none"> ▶ Extend runway to (H, M, L). ▶ Air cargo facilities (H, H, L). ▶ Local road outside shore areas work and fishing. (H, ▶ Dock damaged, pushed ashore, apart, needs rep ▶ Navigation in circumvent rapids would improve Lake for fish development. (
Chesterfield Inlet	<ul style="list-style-type: none"> ▶ New dock damage repairs. (O& M, ▶ Runway extensio

- * *Requires further study*
- ** *Applies to other communities*

By: M. S. Stevenson & Kellogg

**SUMMARY OF TRANSPORTATION
ISSUES AND CONCERNS**

Keewatin Region

Community	Issues and Concerns	
	Local	Regional
Chesterfield Inlet (continued)		<ul style="list-style-type: none"> ▶ All weather road from Manitoba to Keewatin would reduce transport costs and improve reliability. (M, ?, L)* ▶ Sealift should arrive earlier. (O&M)
Coral Harbour	<ul style="list-style-type: none"> ▶ Construct breakwater to protect small craft. (H, M, M) ▶ If breakwater not completed, mooring area should be expanded. (H, H, L) ▶ Air passenger and cargo rates are too high. (H, H, L)** ▶ Create boat pull-out area on Coates Island for local use and tourist activity. (H, M, L) ▶ Construct pull-out area and breakwater at Native Point to enhance hunting and tourism. (H, L, L) 	<ul style="list-style-type: none"> ▶ Air cargo service is inadequate. (M, H, L) ▶ Construct a road from Manitoba to Rankin Inlet with Rankin Inlet serving as a regional distribution centre. (M, ?, L)*

* *Requires further study*
 ** *Applies to other communities*

*Social
Economic
Safety
(O& M)* *High, Medium, Low
High, Medium, Low
High, Medium, Low
Requires improved organization and
management and/or maintenance*

PRIMARY SCREEN

Project Impact

Factors

	High	Medium	Low
Economic	Will affect local/ regional economy by > 10%	3 - 9%	< 3% 0
Social	Will alter basic fabric of society	Will improve quality/standard of life	Little or no social impact
Safety	Life threatening	Noticeable safety concern	No safety relationship

DECISION RULE

Projects will be assessed further if

- High economic impact

OR

- Medium economic impact and one high in social or safety categories

AND

- Have some strategic significance

Short list will be discussed in a workshop
with GNWT Transportation managers
on November 8th and will be presented
to the Steering Committee November 9th.

ECONOMIC MODEL

REVISED BASE CASE CREATED FROM

- 1989 NWT Labour Force Survey
- Statistics Canada 1984 input-output model of the NWT economy
- Latest information from the CANSIM data base
- NWT Statistics Quarterly
- Informetrica and forecasts of the Canadian economy to year 2000
- Conference Board of Canada forecasts of the Canadian economy to year 2000

ECONOMIC MODEL

REVISED BASE CASE DISCUSSED WITH:

- GNWT

- Economic Development
- Housing Corporation
- Bureau of Statistics
- Energy, Mines and Petroleum Resources

- Government of Canada

- Indian and Northern Affairs
- Energy, Mines and Resources
- Canada Mortgage and Housing Corporation

ECONOMIC MODEL

BASE CASE ASSUMPTIONS

- Federal Transfers to GNWT
 - Linked to increases in Provincial/Municipal spending in Southern Canada

- Housing Corporation
 - Accommodates population growth
 - Replaces depreciated housing
 - Increases housing stock per capita by 1% per year

- Mineral Exports
 - Norman Wells output declines as scheduled
 - Mining exports grow slightly faster than the long term historical average rate

- Fish and Fur
 - Held approximately constant in real terms

ECONOMIC MODEL

RESULTS OF BASE CASE

- Real GDP

- Remains essentially constant to 2000
- Increases modestly 2000 to 2010

- Per capita real disposable income declines as population grows faster than output

1989	\$10,185
2000	8,893
2010	7,888

- Native population

1989	33,000
2000	43,700
2010	56,100

- Non-native population

1989	20,800
2000	19,000
2010	20,800

ECONOMIC MODEL

RESULTS OF BASE CASE

Native Labour Force Statistics

	1989	2000	2010
Population 15-64	19,100	25,200	31,900
Employed	7,500	8,700	9,500
“Officially” Unemployed	3,100	6,700	0,000
“Total” Unemployed	7,900	11,600	6,300
Total Unemployment rate	51%	57%	63%

ECONOMIC MODEL

IMPACT OF GAS PIPELINE

Native Labour Force Statistics (change from base case)

	2000	2010
Employed	+300	+500
“Officially” Unemployed	-300	-500
“Total” Unemployed	-300	-500

NEXT STEPS

- . Complete revisions to community reports
- . Complete Interest Group report
- . Conduct Phase III analysis

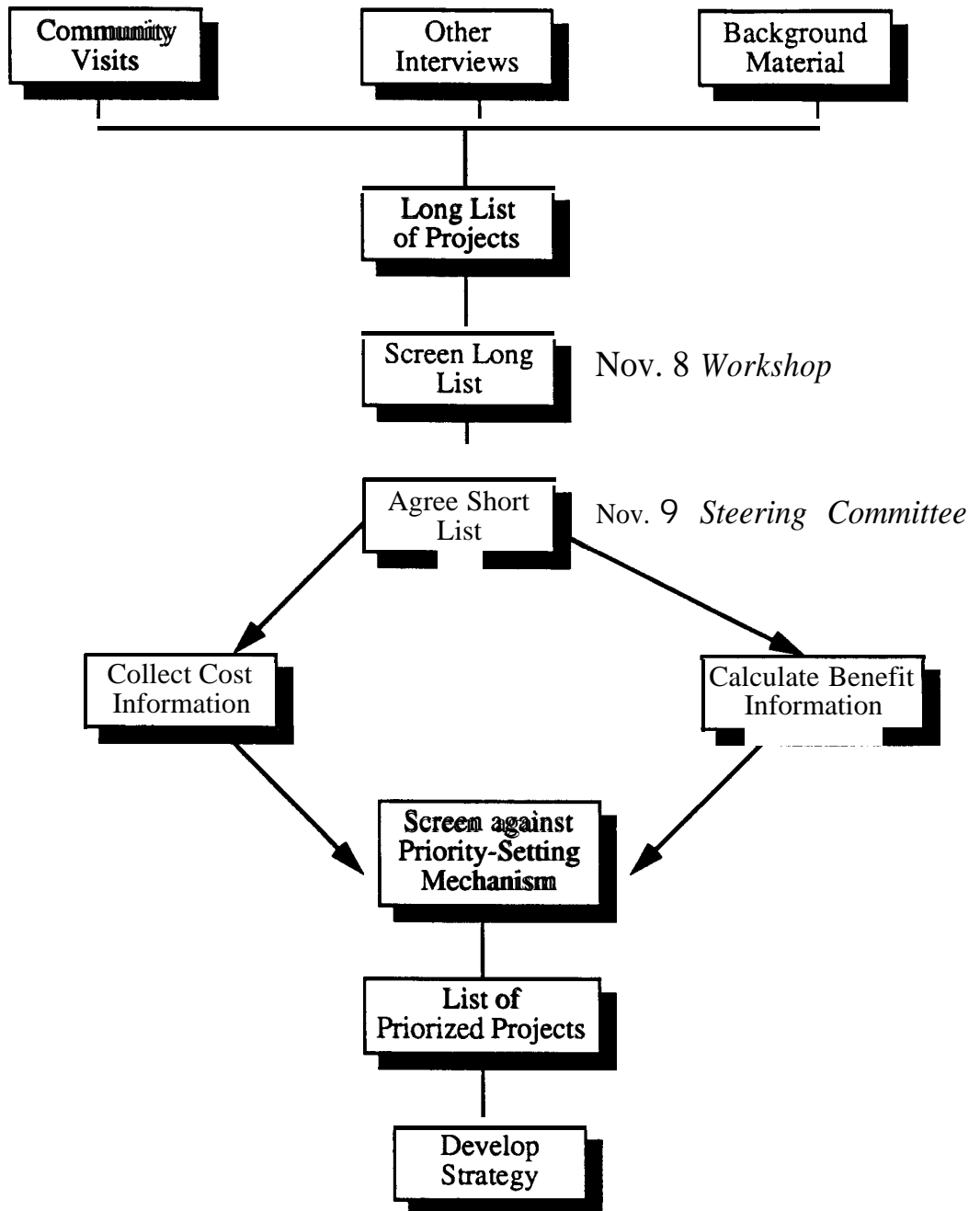
Determine future traffic demands

Identify alternative modal solutions

- Capital costs
- Operating costs
- Maintenance costs
- Quality benefits
- Implementation and staging constraints
- Intangible benefits
- Economic parameters
- Environmental impacts

- Comparative evaluation by mode
- Policy screen
- Ranking

PROJECT OVERVIEW



PRIORITY SETTING MECHANISM

Factors	Weight	1	2	3	4	5	6	7	8	9	10
PROJECTS											
<p>Economic</p> <ul style="list-style-type: none"> - Return on investment - Capital cost - On-going operating costs - Likely assistance from other jurisdictions 											
<p>Social</p> <ul style="list-style-type: none"> - Improves quality of life within the community - Improves access to other communities in the region. - Improves access to extra-regional world - Creates employment within community for construction - Creates on-going employment within community - Permanence of improvement 											
<p>Safety</p> <ul style="list-style-type: none"> - Removes life-threatening concern - Reduces incidence of injury 											
Totals	100										

The Steering Committee must agree on the weights established before we begin rating the projects

SHORT-LISTED PROJECTS

Cost Categories

Responsibility

Obtained from:

- NWT Transportation data
- P & R standards
- Original analysis

Rae

Benefit Categories

Obtained from:

- Interviews
- Original analysis
- Other studies

- Stabler ("mega projects")
- Rae (transportation-related)
- Shelley/Pammeter (other)

A "spec" sheet for each short-listed project will be developed in the next week

Appendix

List of Transportation Issues and Concerns

B R g

Community	Local
Arctic Bay	<ul style="list-style-type: none"> <li data-bbox="1351 432 1652 513">▶ Floating dock washed away by wind. (H, M, L) <li data-bbox="1351 540 1652 620">▶ Current dock being used in winter. (H, L, L) <li data-bbox="1351 647 1652 755">▶ Dock needs to be moved west to facilitate loading. (M, M, L) <li data-bbox="1351 782 1652 889">▶ Submergeable cranes would improve unloading procedure. (H, M, L) <li data-bbox="1351 916 1652 1064">▶ Improve and extend dock to enhance hunter access to docking area and supply. (H, M, L) <li data-bbox="1351 1091 1652 1225">▶ Current runway under construction, an emergency strip extended to accommodate. (M, H, L) <li data-bbox="1351 1252 1652 1303">▶ Air fares are too high.

* *Requires further study*

** *Applies to other communities*

**SUMMARY OF TRANSPORTATION
ISSUES AND CONCERNS**

B R

Community	Issues and Concerns	
	Local	Regional
Arctic Bay (continued)	<ul style="list-style-type: none"> ▶ Cargo space needed at Nanisivik Airport (First Air rep). (H, H, L) 	
Broughton Island	<ul style="list-style-type: none"> ▶ Work on breakwater needed (some work currently being done where municipal funds are available). (O& M) ▶ Airpoprt damaged by flooding, funding required. (H, H, H) ▶ Air passenger and cargo capacity inadequate. (H,H,M) ▶ Airstrip should be extended. (H,M,M) ▶ Compactor needed to maintain airstrip; safety issue. (O& M) ▶ Airstrip needs resurfacing. (M,H,M) ▶ Firetruck needed for airstrip. (H,L,H) 	<ul style="list-style-type: none"> ▶ More competition in air service should result in cargo and passenger rate reductions. (H, H, L)**

* *Requires further study*
 ** *Applies to other communities*

Social *High, Medium, Low*
Economic *High, Medium, Low*
Safety *High, Medium, Low*
(O& M) *Requires improved organization and management and/or maintenance*

**SUMMARY OF TRANSPORTATION
ISSUES AND CONCERNS**

B R g

Community	Issues and Concerns	
	Local	Regional
Broughton Island (continued)	<ul style="list-style-type: none"> ▶ Refueling station needed for aircraft. (L,H,H)** 	<ul style="list-style-type: none"> ▶ Return float plane service. (M,M,L)
Cape Dorset	<ul style="list-style-type: none"> ▶ Build causeway from Island to mainland for access to gravel sources. (M,M,L) ▶ Build local road outside hamlet for access to sea when ice conditions on bay restrict use by hunters and fishermen. (H,M,L) ▶ Remove rock areas on southerly runway approach to ease perceived hazardous condition (GNWT representative reviewed runway conditions in Sept. '89). (M,M,H) ▶ Resurface and pave runway. (L,L,H) ▶ Improve runway lighting. (L,L,H) 	

* Requires further study
 ** Applies to other communities

Social
 Economic
 Safety
 (o& M)

High, Medium, Low
 High, Medium, Low
 High, Medium, Low
 Requires improved organization and management and/or maintenance

**SUMMARY OF TRANSPORTATION
ISSUES AND CONCERNS**

Baffin Region

Community	Issues and Concerns	
	Local	Regional
Cape Dorset (continued)	<ul style="list-style-type: none"> ▶ Extend runway to the south to reduce aircraft noise (northerly end is adjacent to hamlet). (H,L,L) 	
Clyde River	<ul style="list-style-type: none"> ▶ Dock too short, too shallow and broken up by storms; unsafe. (H,M,H) ▶ Need sand filling in behind breakwater. (M,M,L) ▶ Cross runway needed to alleviate crosswind problem. (H,M,H) ▶ Security required to prevent hamlet vehicles from crossing runway. (H,M,H) 	<ul style="list-style-type: none"> ▶ Air cargo and passenger capacity must be increased. (M,H,L)
Grise Fiord	<ul style="list-style-type: none"> ▶ Airstrip too short; unsafe. (H,H,H) ▶ Extreme weather conditions, breakwater required to protect vessels from wind, ice. (H,M,M) 	

* *Requires further study*
 ** *Applies to other communities*

Social *High, Medium, Low*
Economic *High, Medium, Low*
Safety *High, Medium, Low*
(O& M) *Requires improved organization and management and/or maintenance*

**SUMMARY OF TRANSPORTATION
ISSUES AND CONCERNS**

Baffin Region

Community	Issues and Concerns	
	Local	Regional
Grise Fiord (continued)	<ul style="list-style-type: none"> ▶ Site selected to provide small craft protection; tidal basin needs to be deepened. (H,M,L) 	
Hall Beach	<ul style="list-style-type: none"> ▶ Need dock or breakwater; severe weather conditions endangering vessels. (M,M,H) ▶ Build road to Hall Lake to facilitate fishing and tourism development. (H,L,L) 	
Igloolik	<ul style="list-style-type: none"> ▶ Improve road to Igloolik Point which provides early access to open water in spring. (H,M,L) ▶ Renovate airport terminal. (H,M,L) ▶ Build breakwater to provide vessel protection and off-loading facility. (H,M,M) 	

* *Requires further study*
 ** *Applies to other communities*

Social *High, Medium, Low*
Economic *High, Medium, Low*
Safety *High, Medium, Low*
(O& M) *Requires improved organization and management and/or maintenance*

**SUMMARY OF TRANSPORTATION
ISSUES AND CONCERNS**

Baffin Region

Community	Issues and Concerns	
	Local	Regional
Igloolik(continued)	<ul style="list-style-type: none"> ▶ Build submergible cradle or slipway to improve haul-out procedure and reduce vessel damage. (H,M,L) 	
Iqaluit	<ul style="list-style-type: none"> ▶ High tide creates access problems for hunters, outfitters and sealift operators. (H,M,L) ▶ Protection needed for small crafts; further breakwater and ditch development needed. (H,M,L) ▶ Refueling station needed for small crafts. (H,M,H) ▶ Require harbour plan to reduce crowding and improve storage of boats and equipment. (H,H,H) ▶ Congestion problem at Transport Canada sealift site. (M,H,H) 	<p>Iqaluit playing a larger role in regional distribution of goods, particularly food. Subsidies required for inter-community air transportation. (H,M,L)</p>

* Requires further study
 ** Applies to other communities

Social High, Medium, Low
 Economic High, Medium, Low
 Safety High, Medium, Low
 (O& M) Requires improved organization and management and/or maintenance

**SUMMARY OF TRANSPORTATION
ISSUES AND CONCERNS**

B R g

Community	Issues and Concerns	
	Local	Regional
Iqaluit (continued)	<ul style="list-style-type: none"> ➤ All of sealift may not arrive this year; shipping season should be extended by Coast Guard icebreakers. (H,M,L) ➤ Plans to build a \$6 million fish processing plant will require construction of a dock which is accessible by offshore fishing vessels. (H,?,L)* ➤ Build local roads and/or trails outside community to encourage tourism. (H,M,L) ➤ Upgrading and maintenance of Apex Community road should be financed by GNWT. (H,L,L) ➤ Improve airport security (airline rep comment). (O& M)** 	
Lake Harbour	<ul style="list-style-type: none"> ➤ Build floating dock for small craft. (H,M,L) 	

* Requires further study
 ** Applies to other communities

Social High, Medium, Low
 Economic High, Medium, Low
 Safety High, Medium, Low
 {O& M} Requires improved organization and management and/or maintenance

**SUMMARY OF TRANSPORTATION
ISSUES AND CONCERNS**

Baffin Region

Community	Issues and Concerns	
	Local	Regional
Lake Harbour (continued)	<ul style="list-style-type: none"> ▶ Need larger area for sealift shore operations. (M,M,L) ▶ Need larger or relocated runway to handle aircraft larger than Twin Otter. (M,H,L) 	
Pangnirtung	<ul style="list-style-type: none"> ▶ General upgrading of all infrastructure required to facilitate growth in tourism and fisheries and to improve search and rescue operations. (H,M,L) ▶ Build a larger airstrip with a larger terminal. (M,H,M) ▶ Plans for harbour development include a breakwater, dredged channel and basin to provide marine access at low tide. (H,L,L) ▶ Builds roads and trails to Auyuittuq National Park to enhance tourism. (H,M,L) 	
* <i>Requires further study</i>		<i>Social</i>
** <i>Applies to other communities</i>		<i>Economic</i>
		<i>Safety</i>
		<i>(O& M)</i>
		<i>High, Medium, Low</i>
		<i>High, Medium, Low</i>
		<i>High, Medium, Low</i>
		<i>Requires improved organization and management and/or maintenance</i>

**SUMMARY OF TRANSPORTATION
ISSUES AND CONCERNS**

Baffin Region

Community	Issues and Concerns	
	Local	Regional
Pond Inlet	<ul style="list-style-type: none"> ▶ Protection needed for small craft. (H,M,H) ▶ Work on breakwater incomplete; sand accumulating. (M,M,L) 	
Resolute Bay	<ul style="list-style-type: none"> ▶ Protection needed for small crafts, site selected. (H,H,H) ▶ Road access outside community would enhance access to historic sites and fishing areas for tourists and local people. (H,L,L) ▶ Air cargo space at terminal and terminal operation should be upgraded. (H,M,L) 	<ul style="list-style-type: none"> ▶ Dock needed to facilitate Lancaster Sound Research and larger craft. (M,M,L) ▶ Local gravel supply has potential for distribution (by barge) to surrounding communities. (M,M,L) ▶ Air cargo capacity (inbound) is inadequate. (M,H,L)
Sanikiluaq	<ul style="list-style-type: none"> ▶ Marine transportation #1 priority (H,H,M) ▶ Breakwater needs extension to protect small crafts. (H,M,H) 	

* *Requires further study*
 ** *Applies to other communities*

Social *High, Medium, Low*
Economic *High, Medium, Low*
Safety *High, Medium, Low*
(O& M) *Requires improved organization and management and/or maintenance*

**SUMMARY OF TRANSPORTATION
ISSUES AND CONCERNS**

Baffin Region

Community	Issues and Concerns	
	Local	Regional
Sanikiluaq (continued)	<ul style="list-style-type: none"> ▶ If breakwater cannot be extended, old dock needs to be repaired and extended. (H,M,H) ▶ Require boat haul-up equipment and anchorage. (H,M,L) ▶ Require barge push-out. (M,H,M) ▶ Local road to Kasegalik Lake would enhance access to open water, fishing and soapstone. (H,L,L) ▶ Road to water supply dangerous, needs upgrading. (H,M,L) ▶ Require road to other side of Flaherty Island to provide access to open water in spring for hunting and search and rescue operations. (H,M,L) ▶ Airstrip too short, aircraft using apron, (M,M,M) 	

* *Requires further study*
 ** *Applies to other communities*

Social
 Economic
 Safety
 (O& M)

High, Medium, Low
High, Medium, Low
High, Medium, Low
Requires improved organization and management and/or maintenance

**SUMMARY OF TRANSPORTATION
ISSUES AND CONCERNS**

Baffin Region

	Issues and Concerns	
Community	Local	Regional

- | | |
|------------------------|--|
| Sanikiluaq (continued) | <ul style="list-style-type: none"> ▶ Strengthen and resurface runway. Have been unable to receive medical evacuation charters at times. (H,M,H)
 ▶ Runway experiences crosswind (letter on file with GNWT). (H,M,H)
 ▶ Require better liaison with GNWT Airports Officer in regard to runway maintenance. (O& M)
 ▶ Airport snow removal inadequate, limits airstrip access. (O& M) |
|------------------------|--|

* *Requires further study*
 ** *Applies to other communities*

Social
Economic
Safety
(O & M)

High, Medium, Low
High, Medium, Low
High, Medium, Low
Requires improved organization and management and/or maintenance

**SUMMARY OF TRANSPORTATION
ISSUES AND CONCERNS**

Keewatin Region

Community	Issues and Concerns	
	Local	Regional
Baker Lake	<ul style="list-style-type: none"> ▶ Extend runway to facilitate jets. (H, M, L). ▶ Air cargo facilities inadequate. (H, H, L). ▶ Local road outside hamlet to protect shore areas would enhance hunting and fishing. (H, L, L). ▶ Dock damaged by ice, timbers pushed ashore, steel frame twisted apart, needs repair. (O& M). ▶ Navigation improvements to circumvent rapids on Thelon River would improve access to Schultz Lake for fishing and tourist development. (H, L, L). 	<ul style="list-style-type: none"> ▶ Support all-weather road to northern Manitoba to reduce freight costs. (M, ?, L)* ▶ Air service, particularly cargo, needs improvement (M, H, L)
Chesterfield Inlet	<ul style="list-style-type: none"> ▶ New dock damaged by ice, requires repairs. (O& M) ▶ Runway extension needed. (H,M,L) 	<ul style="list-style-type: none"> ▶ Air cargo capacity inadequate. (M, H, L)

* *Requires further study*
 ** *Applies to other communities*

Social *High, Medium, Low*
Economic *High, Medium, Low*
Safety *High, Medium, Low*
(O& M) *Requires improved organization and management and/or maintenance*

**SUMMARY OF TRANSPORTATION
ISSUES AND CONCERNS**

Keewatin Region

Community	Issues and Concerns	
	Local	Regional
Chesterfield Inlet (continued)		<ul style="list-style-type: none"> ▶ All weather road from Manitoba to Keewatin would reduce transport costs and improve reliability. (M, ?, L)* ▶ Sealift should arrive earlier. (O & M)
Coral Harbour	<ul style="list-style-type: none"> ▶ Construct breakwater to protect small craft. (H, M, M) ▶ If breakwater not completed, mooring area should be expanded. (H, H, L) ▶ Air passenger and cargo rates are too high. (H, H, L)** ▶ Create boat pull-out area on Coates Island for local use and tourist activity. (H, M, L) ▶ Construct pull-out area and breakwater at Native Point to enhance hunting and tourism. (H, L, L) 	<ul style="list-style-type: none"> ▶ Air cargo service is inadequate. (M, H, L) ▶ Construct a road from Manitoba to Rankin Inlet with Rankin Inlet serving as a regional distribution centre. (M, ?, L)*

* *Requires further study*
 ** *Applies to other communities*

Social *High, Medium, Low*
Economic *High, Medium, Low*
Safety *High, Medium, Low*
(O& M) *Requires improved organization and management and/or maintenance*

**SUMMARY OF TRANSPORTATION
ISSUES AND CONCERNS**

Keewatin Region

Community	Issues and Concerns	
	Local	Regional
Coral Harbour (continued)	<ul style="list-style-type: none"> ▶ Construct road to Kirchoffer River and beyond to provide access to gravel, hunting, fishing and recreation areas. A bridge would be required at Kirchoffer River. (H, L, L) ▶ Clarify maintenance responsibilities for the road between the hamlet and airport. (O& M) 	
Arviat	<ul style="list-style-type: none"> ▶ Dock not built to specifications; underwater at high tide. Accessible only 4 hours per day; inaccessible by longliner. (H, M, L) ▶ Extend runway to permit use by larger aircraft. (H, M, L) ▶ Need road access to larger water supply. (H, L, L) ▶ Air terminal needs to be upgraded. (H, M, L) 	<ul style="list-style-type: none"> ▶ Support winter road to Gillam, Manitoba in the short term; with expansion to all-weather road in longer term. (M, ?, L)*

* Requires further study
 ** Applies to other communities

Social High, Medium, Low
 Economic High, Medium, Low
 Safety High, Medium, Low
 (O& M) Requires improved organization and management and/or maintenance

**SUMMARY OF TRANSPORTATION
ISSUES AND CONCERNS**

Keewatin Region

Community	Issues and Concerns	
	Local	Regional
Arviat (continued)	<ul style="list-style-type: none"> ▶ Build road to Maguse Lake and beyond for local and tourist use. Will also provide access to float plane base and exploration crews. (H, L, L) 	
Rankin Inlet	<ul style="list-style-type: none"> ▶ Breakwater and dock facilities for longliners promised by GNWT, not provided. (H, M, L) ▶ Terminal facilities should expand to match runway extension and upgrading. (H, M, L) ▶ Mixed opinions were expressed on the idea of building local roads to access hunting and fishing areas outside of the community. (M, L, L) 	<ul style="list-style-type: none"> ▶ Air cargo service inadequate, too expensive. (M, H, L)** ▶ Air service reduced after deregulation. (M, H, L)** ▶ Perceive potential to develop as a regional distribution centre. (H, M, L) ▶ Infrastructure needs cannot be addressed until future of rail line to Churchill is certain. (M,?, L)* ▶ Address environmental and social impacts of potential winter or all-weather road to northern Manitoba. (council members expressed mixed

* Requires further study
** Applies to other communities

Social High, Medium, Low
Economic High, Medium, Low
Safety High, Medium, Low
(O & M) Requires improved organization and management and/or maintenance

**SUMMARY OF TRANSPORTATION
ISSUES AND CONCERNS**

Keewatin Region

Community	Issues and Concerns	
	Local	Regional
Rankin Inlet (continued)		<p>opinions on subject of road construction) (M, ?, H)*</p> <ul style="list-style-type: none"> ▶ Mixed opinions were expressed on the idea of building a road between Rankin Inlet and Chesterfield Inlet or Whale Cove. (M, ?, L)* ▶ Rankin Inlet has potential for transportation hub (all modes) for Keewatin. Barge terminal required. (M, M, L)
Repulse Bay	<ul style="list-style-type: none"> ▶ Dock promised by GNWT not provided. (H, M, L) ▶ Build local roads to provide access to gravel, historic sites, camping and fishing areas. (H, L, L) ▶ Relocate airstrip to free land for building sites. (H, L, L) 	

* *Requires further study*
 ** *Applies to other communities*

Social High, Medium, Low
Economic High, Medium, Low
Safety High, Medium, Low
(O& M) Requires improved organization and management and/or maintenance

**SUMMARY OF TRANSPORTATION
ISSUES AND CONCERNS**

Keewatin Region

Community	Issues and Concerns	
	Local	Regional
Whale Cove	<ul style="list-style-type: none"> ▶ Dock promised by GNWT not provided. (H, M, L) ▶ Build road to White Rock Lake to provide access for hunters when sea is rough. (H, L, M) ▶ Support winter or all-weather road to Rankin Inlet. (H, L, L) ▶ Currently improving road to airport. (H, M, M) ▶ Extend runway to permit use by jet aircraft. (H, M, L) ▶ Build road to ATV trail to Okalik's outpost camp to improve access to sea and fishing. (H, L, L) ▶ Need better equipment to maintain runway. (O& M) 	<ul style="list-style-type: none"> ▶ Require improved air service, particularly as related to HS 748 service and air cargo. (M, H, L)

* *Requires further study*
 ** *Applies to other communities*

Social
Economic
Safety
(O& M)

High, Medium, Low
High, Medium, Low
High, Medium, Low
Requires improved organization and management and/or maintenance

**SUMMARY OF TRANSPORTATION
ISSUES AND CONCERNS**

Kitikmeot Region

Community	Issues and Concerns	
	Local	Regional
Cambridge Bay	<ul style="list-style-type: none"> ▶ Runway and other airside surfaces require major resurfacing. (H,M,M) ▶ Protect staging area by keeping buildings and other uses which would interfere with barge unloading and temporary storage of cargo away from area. (H,H,M) (O &M) ▶ Would like a road/3-4 wheeler track (35 miles) to Ferguson Lake, for fishing. (H,L,L) ▶ Would like a recreational road (30 miles) for 3 and 4 wheelers to Mt. Pelly. (H,L,L) ▶ Need float plane base on river. (M,M,L) 	<ul style="list-style-type: none"> ▶ With loss of NWT Air and DC 3 service to Spence Bay, Gjoa Haven and Pelly Bay, communities at mercy of one carrier again. (M,L,L) ▶ Transportation links to/from Holman unacceptable. (L,L,L)
Coppermine	<ul style="list-style-type: none"> ▶ Need better barge dock. Major dredging may be required. May be necessary to realign rivers exit 	

* Requires further study
 ** Applies to other communities

Social High, Medium, Low
 Economic High, Medium, Low
 Safety High, Medium, Low
 (O & M) Requires improved organization and management and/or maintenance

**SUMMARY OF TRANSPORTATION
ISSUES AND CONCERNS**

Kitikmeot Region

Community	Issues and Concerns	
	Local	Regional
Coppermine (continued)	<p>through silt islands in river mouth. (H,H,L)</p> <ul style="list-style-type: none"> ▶ Present dock is an old wood crib and is not well maintained. (H,M,L) (O& M) ▶ Little marshaling area next to the dock. (H,H,L) ▶ Construct a winter road (10 miles) to MacKenzie Pt. or Four Mile Bay if Echo Bay opens up a new lead, zinc and silver mine in the MacGregor Lake area. (H,M,L) ▶ Need bigger apron for jets parking. A 200 x 200 foot expansion would provide total apron area of 400x 500 feet. (L,L,L) ▶ Runway sub-base needs repair and a gravel overlay required. (L,M,M) 	

* *Requires further study*
 ** *Applies to other communities*

Social
Economic
Safety
(O& M)

High, Medium, Low
High, Medium, Low
High, Medium, Low
Requires improved organization and management and/or maintenance

**SUMMARY OF TRANSPORTATION
ISSUES AND CONCERNS**

Kitikmeot Region

Community	Issues and Concerns	
	LoCat	Regional
Coppermine (continued)	<ul style="list-style-type: none"> ▶ Would like airstrip paved. (L,L,M) ▶ NWT Air wants I.L.S.(L,L,H) ▶ Would like a new, larger terminal built when apron expanded. (H,M,M) ▶ Concern over a lack of capacity to control an oil spill. (H, M,H)* 	
Gjoa Haven	<ul style="list-style-type: none"> ▶ Want permanent dock facility for barges. (M,M,M) ▶ Airport terminal building requires expansion. (H,M,M) ▶ Would like runway extended. (L,L,M) ▶ Would like recreational trail (3-4 miles) to Swan Lake improved. (H,L,L) 	<ul style="list-style-type: none"> ▶ Would like GNWT to give support to other air carriers who may want to service Kitikmeot Region. (M,L,L)

* *Requires further study*
 ** *Applies to other communities*

Social High, Medium, Low
Economic High, Medium, Low
Safety High, Medium, Low
(O& M) Requires improved organization and management and/or maintenance

**SUMMARY OF TRANSPORTATION
ISSUES AND CONCERNS**

Kitikmeot Region

Community	Issues and Concerns	
	Local	Regional
Gjoa Haven (continued)	<ul style="list-style-type: none"> ▶ Would like a road (20 -25 miles) to Kakevatovik (Koka Lake) built. (H,L,L) 	
Holman	<ul style="list-style-type: none"> ▶ Increase runway length from 4,300 feet to permit handling of Hercules and jets. (H,M,H) ▶ Expand air terminal facility -- too small to handle volume of passengers and freight. (H,H,M) ▶ Improve instrumentation at the airport to allow bad-weather service. (H,H,H)** ▶ Need more than one full-time weather observer (back-up position limited to 8 hours/month -- not sufficient to adequately train). (H,H,H)** 	<p>Construct a bridge over the MacKenzie River between Hay River and Yellowknife -- would reduce the cost of goods to Yellowknife which in return lowers costs to Holman. (H,L,L)</p>

* *Requires further study*
 ** *Applies to other communities*

Social *High, Medium, Low*
Economic *High, Medium, Low*
Safety *High, Medium, Low*
(O& M) *Requires improved organization and management and/or maintenance*

**SUMMARY OF TRANSPORTATION
ISSUES AND CONCERNS**

Kitikmeot Region

Community	Issues and Concerns	
	Local	Regional
Holman (cont'd)	<ul style="list-style-type: none"> ▶ Expand roads to hunting and fishing areas plus the community golf course. (H,L,L) ▶ Repair dock area so that barge landings are easier to handle. (H,L,L) ▶ Require an improved float plane docking area if tourism opportunities are to be realized. (M,M,L) 	
Pelly Bay	<ul style="list-style-type: none"> ▶ Construction of local roads or ATV trails could enhance access to nearby lakes and open water for hunters and tourists. (H,L,L) ▶ Road to DEW line site at Shepard's Bay could provide access to sealife landing area. (H,M,M) 	<ul style="list-style-type: none"> ▶ Air passenger and cargo space inadequate. (M,H,L) ▶ Pelly Bay does not receive sea lift. (H,H,L) ▶ Winter road to Spence Bay and Gjoa Haven may be good idea if environmental concerns are addressed. (M,L,L)

* Requires further study
 ** Applies to other communities

Social High, Medium, Low
 Economic High, Medium, Low
 Safety High, Medium, Low
 (O & M) Requires improved organization and management and/or maintenance

**SUMMARY OF TRANSPORTATION
ISSUES AND CONCERNS**

Kitikmeot Region

Community	Issues and Concerns	
	Local	Regional
Pelly Bay (continued)	<ul style="list-style-type: none"> ▶ Natural breakwater at river mouth should be expanded to facilitate more boats; area too shallow and too small to accommodate all community boats. (H,M,L) ▶ Airstrip too close to community; causing safety, security and noise problems. (H,M,H) ▶ Consider using abandoned DEW line airstrip. (H,H,L) ▶ Lights and fencing needed for existing airstrip. (H,M,H) ▶ Runway needs resurfacing. (M,M,M) ▶ Road to gravel supply needed in 5-10 years. (H,L,L) 	

* *Requires further study*
 ** *Applies to other communities*

Social *High, Medium, Low*
Economic *High, Medium, Low*
Safely *High, Medium, Low*
(O& M) *Requires improved organization and management and/or maintenance*

**SUMMARY OF TRANSPORTATION
ISSUES AND CONCERNS**

Kitikmeot Region

Community	Issues and Concerns	
	Local	Regional
Spence Bay	<ul style="list-style-type: none"> ▶ Extend runway to 5,500 feet to enable jet and maybe F-28 service. (M,M,M) ▶ Extend CARS hours. (M, M,H)** ▶ Require runway resurfacing. (H,M,M) ▶ Need a dock facility and clear adjacent area for staging. Keep clear sand beach used by small craft. (H,M,M) ▶ Need larger terminal. Present terminal cannot hold all passengers during refueling; limited space for baggage; practically all freight must be stored outside. (H,M,M)** ▶ Need a float plane dock. (H,M,L) ▶ Complete trail (4 miles to go) to Middle Lake. (H,L,L) 	

* *Requires further study*
 ** *Applies to other communities*

*Social
 Economic
 Safety
 (O& M)* *High, Medium, Low
 High, Medium, Low
 High, Medium, Low
 Requires improved organization and
 management and/or maintenance*

**SUMMARY OF TRANSPORTATION
ISSUES AND CONCERNS**

R

Community	Issues and Concerns	
	Local	Regional
Aklavik	<ul style="list-style-type: none"> ▶ Current dock does not meet community needs -- would like a new, permanent dock. (H,M,L) ▶ All-season road to gravel supply. (H,L,L) 	<ul style="list-style-type: none"> ▶ All-season road to link Aklavik to the Dempster Highway. (H,L,L)
Arctic Red River	<ul style="list-style-type: none"> ▶ Require an airport -- current ferry/road system means that community is isolated 2 to 3 months per year. (H,L,M) ▶ Cable ferry to provide direct access to Fort McPherson side of the Dempster Highway -- proposed location would require a road access into the community. (H,L,L) 	<ul style="list-style-type: none"> ▶ Extend the MacKenzie Highway to Wrigley -- open up new fishing areas and increased opportunity for trapping (winter or all-season). (H,?,L)* ▶ Construct bridges across the Peel and MacKenzie Rivers. (H,L,L)
Colville Lake	<ul style="list-style-type: none"> ▶ Improve maintenance of the airport runway. (M,M,M) 	

* *Requires further study*
 ** *Applies to other communities*

Social
 Economic
 Safety
 (O& M)

High, Medium, Low
High, Medium, Low
High, Medium, Low
Requires improved organization and management and/or maintenance

**SUMMARY OF TRANSPORTATION”
ISSUES AND CONCERNS**

Inuvik Region

Community	Issues and Concerns	
	Local	Regional
Colville Lake (continued)	<ul style="list-style-type: none"> ▶ Relocate the airport farther away from the community and increase the runway length -- handle larger aircraft (Hercules and DC3). (M,L,M) ▶ Add lights and a non-directional beacon at the airport. (M,M,M) ▶ Provide permanent equipment to the community so that they can maintain the runway -- tender airport maintenance since current contractor is viewed as not doing enough. (H,M,M) (O & M) ▶ Winter road connecting Colville Lake to Fort Good Hope. (H,M,L) ▶ All-season road connecting Colville Lake to Fort Good Hope. (M,L,L) 	

* *Requires further study*
 ** *Applies to other communities*

Social
Economic
Safety
(O & M)

High, Medium, Low
High, Medium, Low
High, Medium, Low
Requires improved organization and management and/or maintenance

**SUMMARY OF TRANSPORTATION”
ISSUES AND CONCERNS**

Inuvik Region

Community	Issues and Concerns	
	Local	Regional
Fort Franklin	<ul style="list-style-type: none"> ▶ Relocate airport farther from the community -- facility also requires an expanded parking apron. (M,L,L) ▶ Need more than one full-time weather observer (back-up position limited to 8 hours/month -- not sufficient to adequately train). ALSO Fort Franklin currently has less coverage than either Wrigley or Fort Good Hope, both of which have less activity. (M, M,M)** ▶ Increase runway length by 500 feet. (M,M,L) ▶ Improve air communications to eliminate current blank spots -- 100 miles out of Fort Franklin/1 50 miles out of Yellowknife. (L,M,H)** ▶ Provide fencing around airport to prevent residents from crossing in both summer and winter. (M,L,M) 	<ul style="list-style-type: none"> ▶ All-season connection to Fort Franklin as part of the all-season extension of the MacKenzie Highway -- NOT SUPPORTED BY ALL MEMBERS OF THE COMMUNITY. (L,L,L)

* Requires further study
** Applies to other communities

Social High, Medium, Low
Economic High, Medium, Low
Safety High, Medium, L.Qw
(O& M) Requires improved organization and management and/or maintenance

**SUMMARY OF TRANSPORTATION
ISSUES AND CONCERNS**

Inuvik Region

Community	Issues and Concerns	
	Local	Regional
Fort Franklin (continued)	<ul style="list-style-type: none"> ▶ Construct winter road using two contracts -- one from each end to permit earlier opening. (M,M,L) 	
Fort Good Hope	<ul style="list-style-type: none"> ▶ Relocate airport -- concerned that same tragedy that happened in Fort Franklin will happen here. (H,L,M) ▶ Current dock anchorage does not appear strong enough. (L,L,M) ▶ Move the weather observer to the airport from present location in the centre of the community. (L,L,M) ▶ Provide fencing around the airport to prevent residents from crossing in both summer and winter. (M,L,M) 	<ul style="list-style-type: none"> ▶ Earlier start to the winter road. (H,H,M) ▶ Hire a more qualified contractor to build the winter road. (O& M) ▶ All-season road (extend MacKenzie Highway through to Inuvik). (H,?,L)*
Fort McPherson	<ul style="list-style-type: none"> ▶ Concerned over use of calcium on the Dempster Highway at locations near freshwater lakes. (L,L,L)* 	

* Requires further study
 ** Applies to other communities

Social High, Medium, Low
 Economic High, Medium, Low
 Safety High, Medium, Low
 (O & M) Requires improved organization and management and/or maintenance

**SUMMARY OF TRANSPORTATION
ISSUES AND CONCERNS**

R

Community	Issues and Concerns	
	Local	Regional
Fort McPherson (continued)	<ul style="list-style-type: none"> ▶ Replace ferry with a bridge over the Peel River -- reduce the silt deposit problems which are felt to be caused by the ferry and permit a relocation of the Inuvik air shuttle from Midway to Fort McPherson. (L,L,L) ▶ Would like a crushing facility to be set-up near Fort McPherson -- supply gravel for Dempster Highway maintenance. (M,L,L) ▶ Construct a useable wharf near the community. (M,M,L) 	<ul style="list-style-type: none"> ▶ Build a winter road from Aklavik to Fort McPherson -- reduce cost of living in Aklavik and increase competition between the two communities (would permit better use of the recreation facilities). (H,L,L)
Fort Norman	<ul style="list-style-type: none"> ▶ Expand and improve maintenance of the marshaling area along side of the NTCL dock -- establish a warehouse facility for security. (M,H,L) ▶ Communications with NTCL regarding time of arrival and contents are very poor. (O & M)** 	<ul style="list-style-type: none"> ▶ All-season road (extend MacKenzie Highway through to Inuvik). (H,?,L)* ▶ Extend all-season road to include Fort Franklin OR construct an all-season road between Fort Norman and Fort Franklin. (H,L,L)

* *Requires further study*
 ** *Applies to other communities*

Social
Economic
Safety
(O & M)

High, Medium, Low
High, Medium, Low
High, Medium, Low
Requires improved organization and management and/or maintenance

**SUMMARY OF TRANSPORTATION”
ISSUES AND CONCERNS**

Inuvik Region

Community	Issues and Concerns	
	Local	Regional
Fort Norman (continued)		▶ Open-up Canol Road. (L,L,L)
Inuvik	<ul style="list-style-type: none"> ▶ Establish a Town wharf or dock up-river at a point where winter road starts. (H,M,M) ▶ Reduce grade on Marine By-Pass hill. (M,M,H) 	<ul style="list-style-type: none"> ▶ Improve maintenance on the Dempster Highway. (O & M) ▶ Widen the Dempster Highway. (L,L,M) ▶ Build the MacKenzie Highway (initially expand winter road from Fort Simpson to the Dempster Highway as a test). (H,?,L)*
Norman Wells	<ul style="list-style-type: none"> ▶ Airport terminal was designed to handle 16 but frequently handles 60 to 65 travelers. (H,H,M) ▶ Require a community dock to handle small craft -- transfer NTCL dock to the Coast Guard and use the Coast Guard dock for both NTCL and community use. (H,M,L) 	<ul style="list-style-type: none"> ▶ All-season road (extend MacKenzie Highway through to Inuvik) <ul style="list-style-type: none"> -- lower cost of living -- increase tourism ▶ creating a circle route with the Dempster Highway. (H,?,L)*

* Requires further study
** Applies to other communities

Social
Economic
Safety
(O & M)
High, Medium, Low
High, Medium, Low
High, Medium, Low
Requires improved organization and management *and/or* maintenance

**SUMMARY OF TRANSPORTATION
ISSUES AND CONCERNS**

R

Community	Issues and Concerns	
	Local	Regional
Norman Wells (continued)	▶ Need a repair facility established for small aircraft. (M,L,L)	▶ Concerns expressed regarding the safety at small airports throughout the N.W.T. (H, M,H)**
Paulatuk	<ul style="list-style-type: none"> ▶ Relocate the airport -- current location is unsafe (severe cross-winds create potential dangers). (H,H,H) ▶ Navigation aids/markers should be lighted so that boats can access after hours. (M,M,H) ▶ Improve barge landing. (M,M,L) ▶ Provide community wharf. (H,M,L) 	
Sachs Harbour	▶ Airport runway needs maintenance -- several years since any gravel was put down. (L,M,M) (O & M)	▶ Concerned regarding condition of the Paulatuk airport -- residents of Sachs Harbour are afraid to fly if it means landing at Paulatuk . (M,M,H)

* *Requires further study*
 ** *Applies to other communities*

Social *High, Medium, Low*
Economic *High, Medium, Low*
Safety *High, Medium, Low*
(O & M) *Requires improved organization and management and/or maintenance*

SUMMARY OF TRANSPORTATION ISSUES AND CONCERNS

Region		Issues and Concerns	
Community	Local	Regional	
Sachs Harbour (continued)	<ul style="list-style-type: none"> ▶ Waiting for a dock to be installed -- recommended in a study conducted two years ago by Coast Guard in Vancouver. (H,M,L) ▶ Need more than one full-time weather observer (back-up position limited to 8 hours/month -- not sufficient to adequately train). (M,M,M)** 		
Tuktoyaktuk	<ul style="list-style-type: none"> ▶ Air terminal building is too small -- cannot handle both freight and passengers (H,H,M) ▶ Would like to control the harbour within the community. (H,L,M) (O& M) ▶ Ultimately relocate airport to IDC land to open up current-airport land for residential development -- requires a bridge to access the proposed site. (H,L,L) 	<ul style="list-style-type: none"> ▶ Provide an all-season road to connect Tuktoyaktuk to Inuvik. (H, M, L)* 	

* *Requires further study*
 ** *Applies to other communities*

Social
Economic
Safety
(O& M)

High, Medium, Low
High, Medium, Low
High, Medium, Low
Requires improved organization and management and/or maintenance

**SUMMARY OF TRANSPORTATION
ISSUES AND CONCERNS**

Fort Smith Region

Community	Issues and Concerns	
	Local	Regional
Detah	<ul style="list-style-type: none"> ▶ Pave road to Yellowknife. (H,M,M) ▶ Need dust control in interim. (H,M,M) 	<ul style="list-style-type: none"> ▶ Pave MacKenzie Highway to Yellowknife. (H,M,M)
Enterprise	<ul style="list-style-type: none"> ▶ Install turning lanes at the weigh scale. One fatality there this summer. (L,M,H) ▶ Need better signage indicating weigh scale and trucks turning. (L,H,H) ▶ Designate a separate parking area for trucks carrying dangerous goods. (L,L,H) ▶ Want a sign saying: 'Welcome to the Gateway to the North'. (H,L,L) 	<ul style="list-style-type: none"> ▶ Potential for a rail staging area for oil and other bulk commodities. (L,L,L)
Fort Liard	<ul style="list-style-type: none"> ▶ Extend airstrip by 800 ft. to accommodate King Airs. (M,L,L) 	

* *Requires further study*
 ** *Applies to other communities*

*Social
 Economic
 Safety
 (O & M)*
*High, Medium, Low
 High, Medium, Low
 High, Medium, Low
 Requires improved organization and
 management and/or maintenance*

**SUMMARY OF TRANSPORTATION
ISSUES AND CONCERNS**

Fort Smith Region

Community	Issues and Concerns	
	Local	Regional
Fort Liard (continued)	<ul style="list-style-type: none"> ▶ Relocate airstrip closer to junction with Liard Highway. Current location is subject to flooding. (H,L,L) ▶ Relocate barge loading area downstream to edge of town with new road east of airstrip. (H,L,L) ▶ Build recreational and tourist roads to nearby lakes. i.e.: Stone Martin Lake, Bovie Lake and Fisherman Lake. (H,L,L) ▶ Build road towards Nahanni National Park. (H,L,L) 	<p>Extend MacKenzie Highway. Fort Liard may then become more of a shipping highway between B.C. and Beaufort. Paving road will not benefit town's economy. People would just pass through faster. (L, ?,L)*</p>
Fort Providence	<ul style="list-style-type: none"> ▶ Airstrip needs more gravel on surface. Presently it is clay and is too soft and slippery in wet weather and in spring thaw. (L,M,H) 	<p>Pave #3 Hwy to Yellowknife and Enterprise in 2-3 years. (H,?, M)*</p>

* Requires further study
** Applies to other communities

Social
Economic
Safety
(O & M)

High, Medium, Low
High, Medium, Low
High, Medium, Low
Requires improved organization and management and/or maintenance

**SUMMARY OF TRANSPORTATION'
ISSUES AND CONCERNS**

Fort Smith Region

Community	Issues and Concerns	
	Local	Regional
Fort Providence (continued)	<ul style="list-style-type: none"> ▶ Install pilot controlled airstrip lights (RCOL) - DOT installing this year. Prefer permanent lights rather than portable system. (L,L,L) ▶ Need packer for airstrip. (O& M) ▶ Hard to remove weeds with grader since grader will push aside or bury the bit of gravel that they have. (O& M) ▶ Would eventually like a small terminal. (H,M,L) ▶ Locate proposed heliport nearer airport rather than behind Forestry station. (H,L,H) ▶ Wharf/dock could use some repair. Only rarely used by barge. Community supplied by road. (O& M) 	<ul style="list-style-type: none"> ▶ Clear wider right of way through bison sanctuary, especially around corners to increase visibility and prevent accidents. (L,L,H) ▶ Build a causeway across the Big Snye to the Island, Use island as an early season barge marshaling point. Feasible if MacKenzie Pipeline gets go ahead and longer shipping seasons are needed. (L,M,L) ▶ Environmental concern about hazardous materials on ferry; arsenic trucks to Enterprise via #3 from Yellowknife. (M, M, H)* ▶ No containment and clean-up equipment available in case of a spill. A spill would be extremely difficult to contain in the wide, fast flowing MacKenzie. (M,M,H)*

* *Requires further study*
 ** *Applies to other communities*

Social
Economic
Safety
(O& M)

High, Medium, Low
High, Medium, Low
High, Medium, Low
Requires improved organization and management and/or maintenance

**SUMMARY OF TRANSPORTATION
ISSUES AND CONCERNS**

Fort Smith Region

Community	Issues and Concerns	
	Local	Regional
Fort Providence (continued)	<ul style="list-style-type: none"> ▶ Would like a launching ramp for trailered boats. (H,M,L) ▶ Improve 'tote' road to Mill Creek (20 miles) .Four or five families live there and community uses area for hunting and fishing. (H,L,L) 	
Fort Resolution	<ul style="list-style-type: none"> ▶ Road to Pine Point needs more gravel. Too much clay and slippery when wet. (L,M,M) (O&M) ▶ Area on road around nine miles from Pine Point is lowest and most in need of repair. (L,M,M) 	
Fort Simpson	<ul style="list-style-type: none"> ▶ Pave highway from town to airport (12.9 km). Encourage more use of MOT airport and town strip could be closed down. (M,H,H) 	<ul style="list-style-type: none"> ▶ Dredge Liard River crossing to enable ferry to carry heavy loads without running aground. (L,M,M)

* *Requires further study*
 ** *Applies to other communities*

Social
Economic
Safety
(O& M)

High, Medium, Low
High, Medium, Low
High, Medium, Low
Requires improved organization and management and/or maintenance

**SUMMARY OF TRANSPORTATION
ISSUES AND CONCERNS**

1 “

Fort Smith Region

Community	Issues and Concerns	
	Local	Regional
Fort Simpson (continued)	<ul style="list-style-type: none"> ▶ Build new float plane base in Snye. (M,M,L) ▶ Build a lower public dock for small boat use. (H,M,L) ▶ Require a new/improved launching ramp. (H,M,L) 	<ul style="list-style-type: none"> ▶ Replace ferry with larger one with less draft and use existing ferry at Camsell Bend. (L,L,L) ▶ Place emergency telephones along highways especially for tourists. (L,L,H) ▶ Finish bridges to Camsell Bend and maintain road to Camsell Bend better. (M,M,L) ▶ Finish road to Wrigley; less important to continue on to Norman Wells. (M,L,L) ▶ Build spring base for marine transport north at Camsell Bend. Could extend season for month or more. (M,M,L) ▶ Re-surface Liard Highway; is a mess after rain. (L,L,M) (O&M)

* *Requires further study*
 ** *Applies to other communities*

Social
Economic
Safety
(O & M)

High, Medium, Low
High, Medium, Low
High, Medium, Low
Requires improved organization and management and/or maintenance

**SUMMARY OF TRANSPORTATION
ISSUES AND CONCERNS**

Fort Smith Region

Community	Issues and Concerns	
	Local	Regional
Fort Simpson (continued)		▶ Wrigley section not well maintained towards Camsell Bend. (O&M)
Fort Smith	<ul style="list-style-type: none"> ▶ Build road (62 km) into Taltson River. Would access the Barrens for tourists launching canoe trips. Would also access the construction of power dams at the Twin Gorges and Elsie Falls. Would also pass through the proposed area for a Bison Ranch. (H,L,L) ▶ Build a recreational boat dock below the rapid. (H,L,L) ▶ Use barge transport for fire wood to Yellowknife and export grit from Ram Concrete. (H,M,L) 	<ul style="list-style-type: none"> ▶ Build road south to Fort McMurray. (L,L,L) ▶ Upgrade and complete paving existing roads in the lower Slave Lake area and MacKenzie River Regions. (H,?, M)* ▶ Road to Pine Point junction has severe load limit until usually mid-June. Due to the upgraded 60 km section that is chip sealed. This year load limit lasted until mid-July. (L,M,L)
Hay River	▶ Concerned about the future of the rail line if Pine Point Mine shuts down. (H,H,L)	▶ Pave highway from Hay River to Yellowknife. (H,M,M)

* Requires further study
 ** Applies to other communities

Social
 Economic
 Safety
 (O & M)
 High, Medium, Low
 High, Medium, Low
 High, Medium, Low
 Requires improved organization and management and/or maintenance

**SUMMARY OF TRANSPORTATION”
ISSUES AND CONCERNS**

Fort Smith Region

Community	Issues and Concerns	
	Local	Regional
Hay River (continued)	<ul style="list-style-type: none"> ▶ Build lakeshore highway between Hay River and Kakisa -- shorten distance from Hay River to Yellowknife. (M,L,L) ▶ Construct marina for recreational use. (M,M,L) 	
Jean Marie River	<ul style="list-style-type: none"> ▶ Build all-weather road (3 km) to new garbage disposal site along winter road with bridge over Jackfish Creek. (H,L,L) ▶ Extend airstrip 800 ft. to accommodate larger aircraft. (L,L,L) ▶ Build all-weather road (27 km) to Liard Highway following existing winter road. Use local labour. (H,M,L) ▶ Install airstrip lighting. (L,L,H) 	

* *Requires further study*
 ** *Applies to other communities*

Social
Economic
Safety
(O& M)

High, Medium, Low
High, Medium, Low
High, Medium, Low
Requires improved organization and management and/or maintenance

**SUMMARY OF TRANSPORTATION”
ISSUES AND CONCERNS**

Fort Smith Region

Community	Issues and Concerns	
	Local	Regional
Jean Marie River (continued)	<ul style="list-style-type: none"> ▶ Build dock to facilitate local scows and provide additional dead man for potential barge use. (H,L,L) 	
Nahanni Butte	<ul style="list-style-type: none"> ▶ Need new airstrip aligned with prevailing winds. Current strip is crosswind, 90 degrees to chinook winds and is flooded most springs. Band has identified 2 potential sites. (M,M,H) ▶ Strip markers need painting and some replacement. Band should be responsible since markers are knocked down when strip dragged or snow removed. (O& M) ▶ Airport maintenance equipment (916 Loader & D-4 Cat) are damaged. No one trained as heavy equipment operators. (O& M) 	

* *Requires further study*
 ** *Applies to other communities*

Social
Economic
Safety
(O& M)
High, Medium, Low
High, Medium, Low
High, Medium, Low
Requires improved organization and management and/or maintenance

**SUMMARY OF TRANSPORTATION
ISSUES AND CONCERNS**

Fort Smith Region

Community	Issues and Concerns	
	Local	Regional
Nahanni Butte (continued)	<ul style="list-style-type: none"> ▶ Winter road should be re-aligned. If band put in ice bridge, road would open sooner. (L,L,M) ▶ Band wants contract to build winter road. (H,M,L) ▶ Band build and maintain all-weather road (22 km) to Liard Highway. (H,M,L) ▶ Relocate dock upstream for more use by floatplanes. (H,M,M) 	
Rae Lakes	<ul style="list-style-type: none"> ▶ Build new airstrip. Land was cleared for new strip 8 years ago. Presently only serviceable with wide tired Twin Otters and Dc 3's. (H,M,H) ▶ Current strip subject to crosswinds. Some houses and a school are adjacent to flight path. (H,M,H) 	

* Requires further study
 ** Applies to other communities

Social High, Medium, Low
 Economic High, Medium, Low
 Safety High, Medium, Low
 (O & M) Requires improved organization and management and/or maintenance

**SUMMARY OF TRANSPORTATION
ISSUES AND CONCERNS**

Fort Smith Region

Community	Issues and Concerns	
	Local	Regional
Rae Lakes (continued)	<ul style="list-style-type: none"> ▶ Need grader to build and maintain new strip. (O& M) ▶ Build float plane dock on both sides of the community to cover all wind conditions. Replace north side dock first. South dock more exposed and needs more solid construction. North dock should be big enough to handle 4-5 aircraft. (H,L,H) ▶ Concern over social impact of an all-weather road. Concern over proximity of winter road to abandoned Ray Rock Uranium mine. Recommend alternative alignment on low lying terrain. (M,M,L) 	
Rae-Edzo	<ul style="list-style-type: none"> ▶ Build airport. (H,H,L) ▶ Build community dock. (H,M,L) 	<ul style="list-style-type: none"> ▶ Pave road to Yellowknife. (H,M,M)

* Requires farther study
 ** Applies to other communities

Social High, Medium, Low
 Economic High, Medium, Low
 Safety High, Medium, Low
 (O & M) Requires improved organization and management and/or maintenance

**SUMMARY OF TRANSPORTATION”
ISSUES AND CONCERNS**

Fort Smith Region

Community	Issues and Concerns	
	Local	Regional
Rae-Edzo (continued)	<ul style="list-style-type: none"> ▶ 10 km road to Rae from Hwy #3 is being replaced with \$6 million all weather highway. Construction is expected to take 2 more years. (H,L,L) 	
Snowdrift	<ul style="list-style-type: none"> ▶ Realign airstrip to avoid large hill at end of runway. Surveying has been done and project is covered under the Arctic Airports Program. (L,M,H) ▶ Repair dock crib. (L,M,L) ▶ NTCL service limited to one barge per year in mid-July. (O & M) ▶ Build road to new dump site. (H,L,L) ▶ Build road (45 km) to Austin Lake to access fishing and hunting areas. Want a rudimentary 4wd road. Road will also provide access to new dump site. (H,L,L) 	

* *Requires further study*
 ** *Applies to other communities*

Social
Economic
Safety
(O & M)

High, Medium, Low
High, Medium, Low
High, Medium, Low
Requires improved organization and management and/or maintenance

**SUMMARY OF TRANSPORTATION
ISSUES AND CONCERNS**

Fort Smith Region

Community	Issues and Concerns	
	Local	Regional
Snowdrift (continued)	<ul style="list-style-type: none"> ▶ Build local winter roads for more access to fuel wood and logs for home building. (H,M,L) ▶ Extend road to strip at same time. (M,M,M) 	
Trout Lake	<ul style="list-style-type: none"> ▶ Remove depression on airstrip. (L,L,H) ▶ Need new airsock. (L,L,H) ▶ Build new airstrip in line with prevailing winds. (M,L,L) ▶ Include mini flight station with new airstrip. (L,L,M) ▶ Build all-weather road to Liard Highway. Controversial issue. Road is not seen as socially acceptable. (L,L,L) 	

* *Requires further study*
 ** *Applies to other communities*

Social
Economic
Safety
(O& M)

High, Medium, Low
High, Medium, Low
High, Medium, Low
Requires improved organization and management and/or maintenance

**SUMMARY OF TRANSPORTATION
ISSUES AND CONCERNS**

m h R g

Community	Issues and Concerns	
	Local	Regional
Trout Lake (continued)	<ul style="list-style-type: none"> ▶ Concern over pollution from the village in the lake water. (L,L,L) 	
Wrigley	<ul style="list-style-type: none"> ▶ Remove pieces from 9 piece floating steel dock to reinforce existing float plane dock. Hamlet can do this. (H,M,L) ▶ Present barge dock little used and not needed. River levels change so much that the docks are usually unserviceable. (H,H,L) ▶ Remove new growth from sides of airstrip. Needs mowing. (O & M) ▶ Build up road to airstrip. Include ditches. (M,M,L) ▶ Winter access proposed to Boot Brothers and Jimmy Yondi's Camps. (M,M,L) 	<ul style="list-style-type: none"> ▶ Continue MacKenzie Highway north. Finish bridges on road to Fort Simpson and put in ferry at Camsell Bend. (M,M,L)

* *Requires further study*
 ** *Applies to other communities*

Social
Economic
Safety
 (O & M)
High, Medium, Low
High, Medium, Low
High, Medium, Low
Requires improved organization and management and/or maintenance

**SUMMARY OF TRANSPORTATION
ISSUES AND CONCERNS**

Fort Smith Region

Community	Issues and Concerns	
	Local	Regional

Yellowknife	<ul style="list-style-type: none"> ▶ Concern over the repair and maintenance on the road into Yellowknife from the airport. (M,H,M) 	<ul style="list-style-type: none"> ▶ Concern over current level of repair and maintenance on highway from Hay River. (M,H,M) ▶ Pave highway between Hay River and Yellowknife. (M,H,L) ▶ Replace current ferry crossing with a bridge. (M,M,L)
-------------	--	---

* *Requires further study*
 ** *Applies to other communities*

*Social
 Economic
 Safety
 (O & M)*

*High, Medium, Low
 High, Medium, Low
 High, Medium, Low
 Requires improved organization and
 management and/or maintenance*